



Funded by
UK Government

AT OUR LAST CONSULTATION TIPTON REGENERATION PROJECT



80%

of residents think the town centre needs more greenery and green space

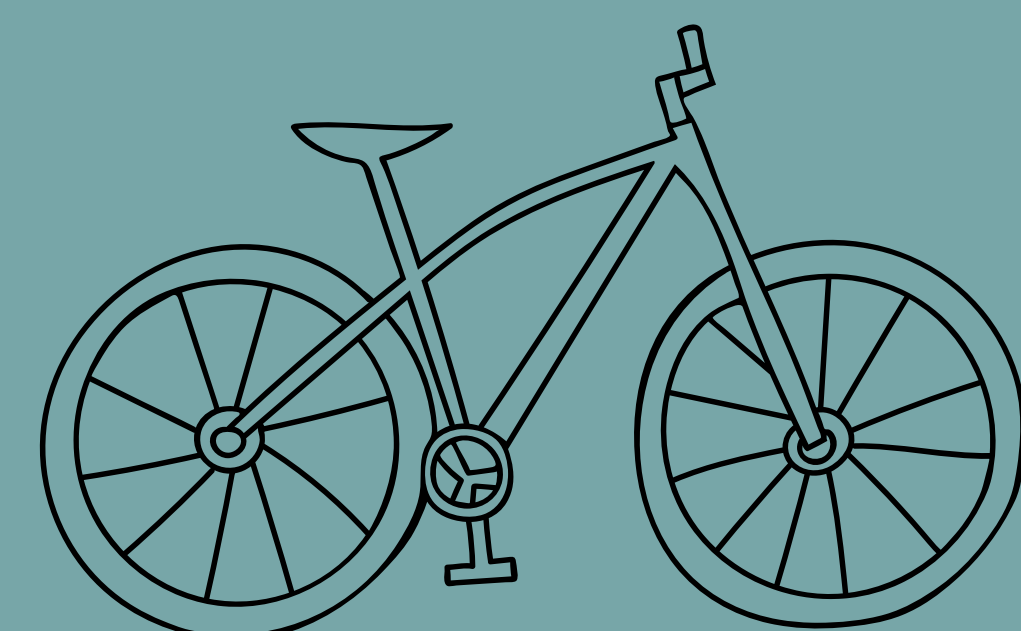
109 COMPLETED
ONLINE SURVEY

104 RESIDENTS
ATTENDED AT THE
LIBRARY

'We need shops and
a public transport'



'It looks run
down and dead,
it's not
somewhere I go
unless I have to.'



Celebrate the
history of the
town centre



Create a space
for a traditional
market in the
town centre



'Be nice to see more
planting and trees
and more benches
for sitting down and
perhaps a play area
for children'

Look at the impact
of cars on the town
centre and improve
cycling and walking
experience

HAVE YOUR SAY!

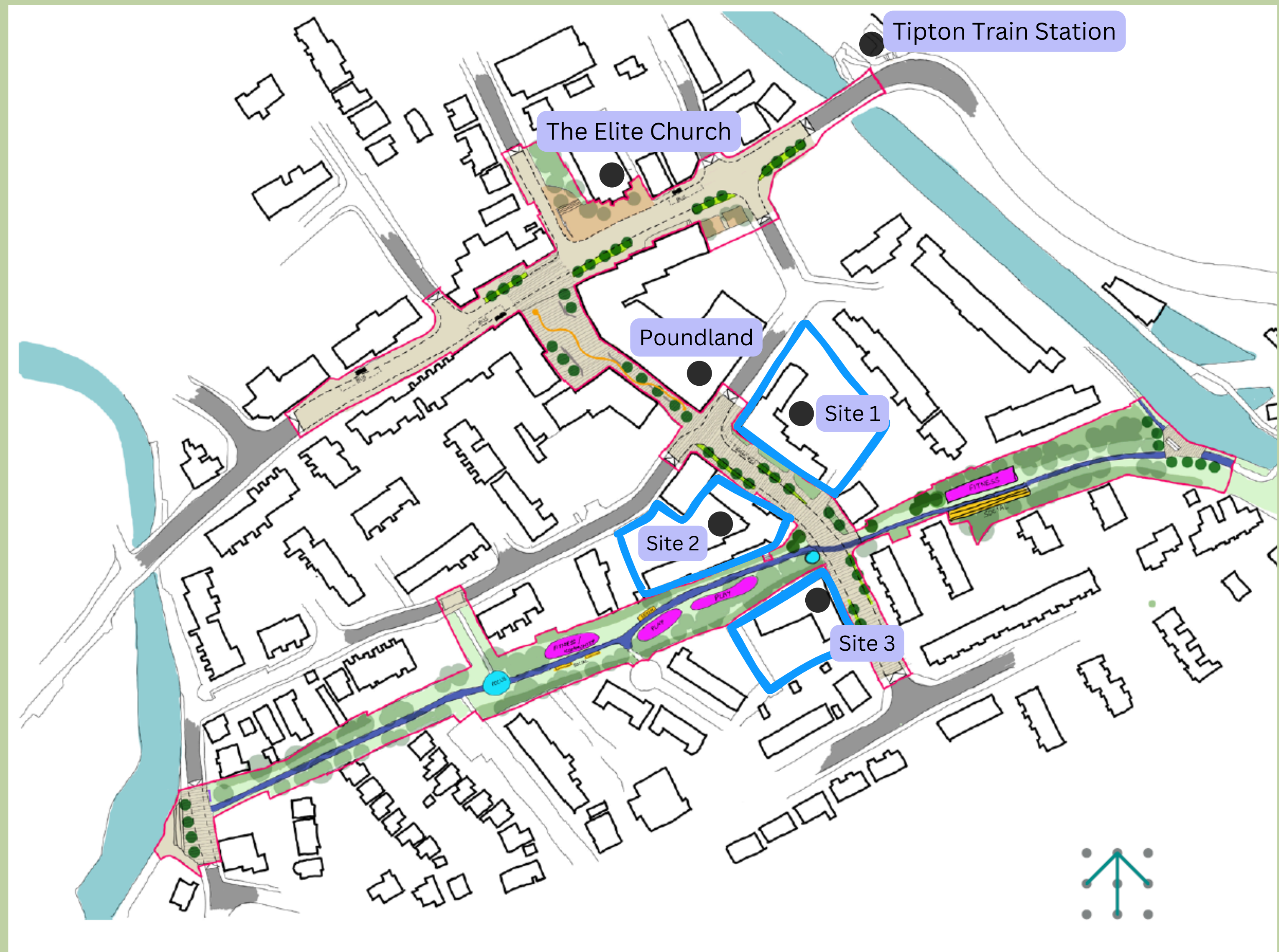
PUBLIC REALM

TIPTON REGENERATION PROJECT

Work is now underway to redevelop three sites in Tipton town centre to provide around 70 affordable new social housing apartments.

Part of the grant funds are for wider improvements around the centre. These will focus on Owen Street, Union Street and the walkway that runs between the two canals and crosses Union Street.

The work aims to make the town centre safer, easier and more pleasant to walk through, by connecting these areas outlined in red, which are separated by Tipton Shopping Centre (Unity Walk/ the precinct).



HOW SANDWELL WANTS TO RECONNECT THE SITES

- Improve paved public spaces including along Owen Street.

- Plan new trees and create an attractive landscape with welcoming public places to socialise.

- Celebrate the canal history.



- Improve traffic flow within Tipton through calming measures.



- Improve the green walkway along the former canal line that runs between Union Street and Elliott's Road.



Funded by
UK Government



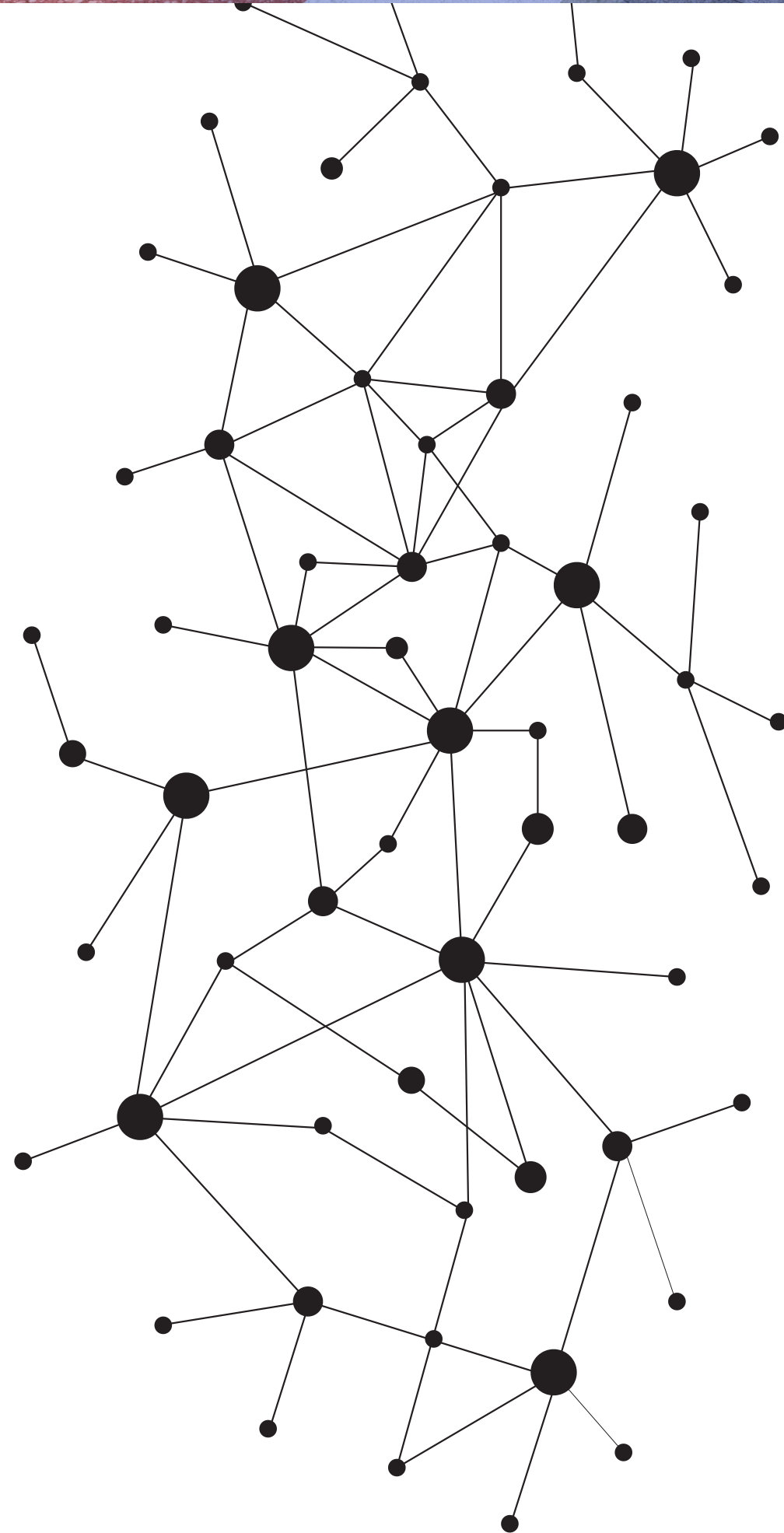
IMPROVING AND CONNECTING PLACES

TIPTON REGENERATION PROJECT



- Make Owen Street and Union Street safer and more pleasant places for people.
- Introduce more trees and greenery along main streets.

- Provide attractive stopping places where people can sit and chat.
- Help businesses by improving and repainting shopfronts.
- Help people who don't know Tipton to find their way around.



Sandwell can improve the highways through:

- Repaving the main footways
- Provide better pedestrian crossings, in the right places
- Lower traffic speeds to 20mph
- Create a shared space for people and traffic, rather than being car centered
- Improve the bus stop

Celebrate and commemorate the towns proud heritage.



Promote health and fitness with better walking running and cycle routes.

Make the walkway between the two canals safer, greener and more attractive.

SOCIAL SPACE

TIPTON REGENERATION PROJECT

New and improved public social spaces will be created.

The creation of a linear park along the walkway will see:

- Health and Fitness Equipment
- Children's play areas
- Public seating and socialising spaces



The improvement to the walkway will create attractive, enjoyable and safe spaces for people to use and to spend their time.

Encourages social Interaction - New social spaces foster connections between people, reducing loneliness and strengthening community bonds.

Supports Local Businesses - Gathering spots attract foot traffic, boosting nearby shops, cafes and services in Tipton

Promotes Wellbeing - Green spaces and recreational areas enhance mental and physical health for all age groups.

Inspires Creativity & Culture - Public spaces can host events, art installations, and performances, enriching local culture.

Enhance Safety & Inclusion - Well-designed spaces throughout the town centre encourages diverse participation and create a safer, more welcoming environment.



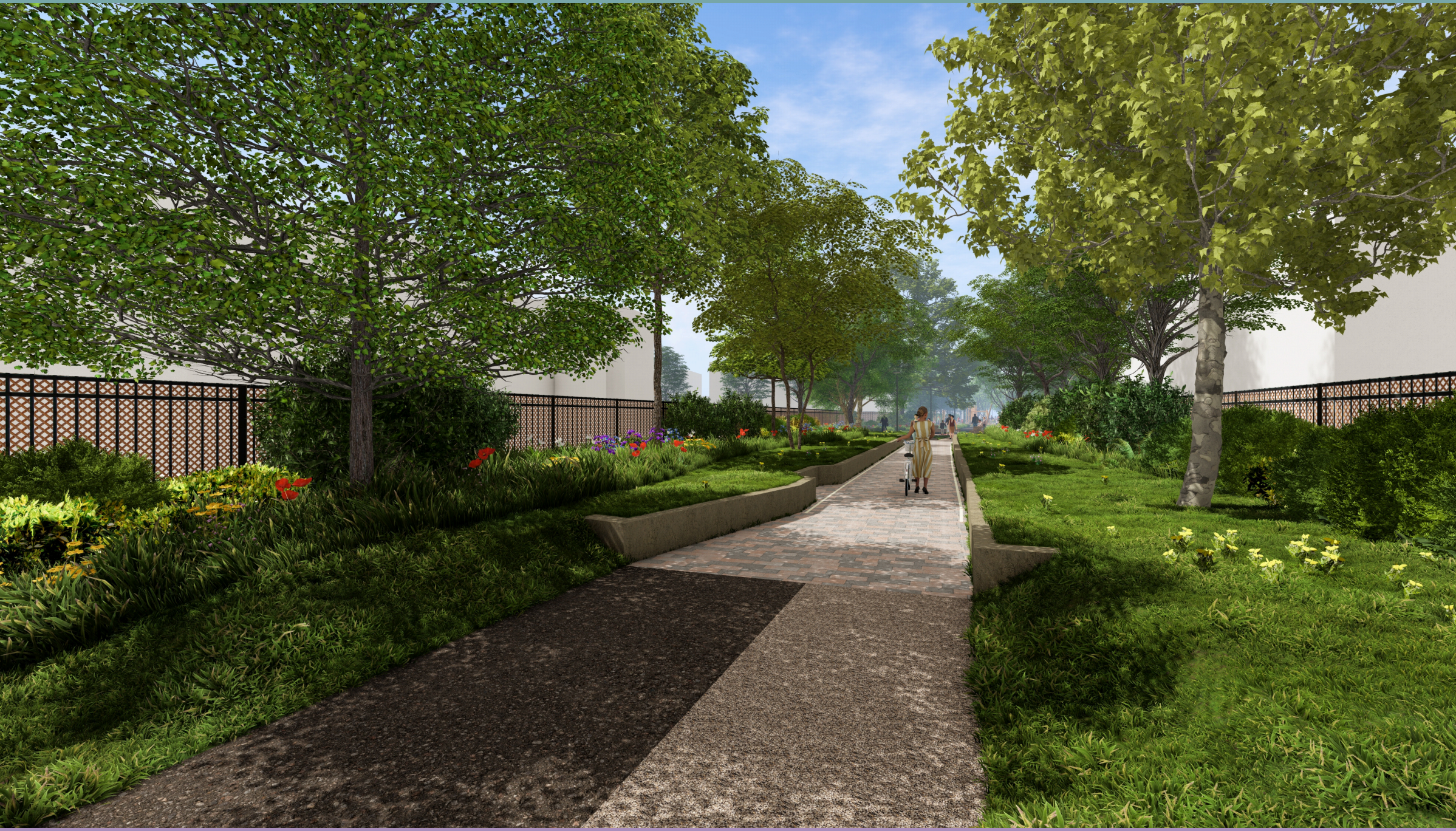


Funded by
UK Government



GREEN SPACE

TIPTON REGENERATION PROJECT



Improvements to the Wellesley Drive 'gated' space, will make the area feel safer, and provide a more accessible and enjoyable social space that is open and more appealing for residents.



Fun & Active Play - Natural play areas give children a safe and exciting place to explore, climb and play.

Relaxing Seating Areas - Comfortable spots around the town centre to sit and enjoy nature, meet friends, or take a break.



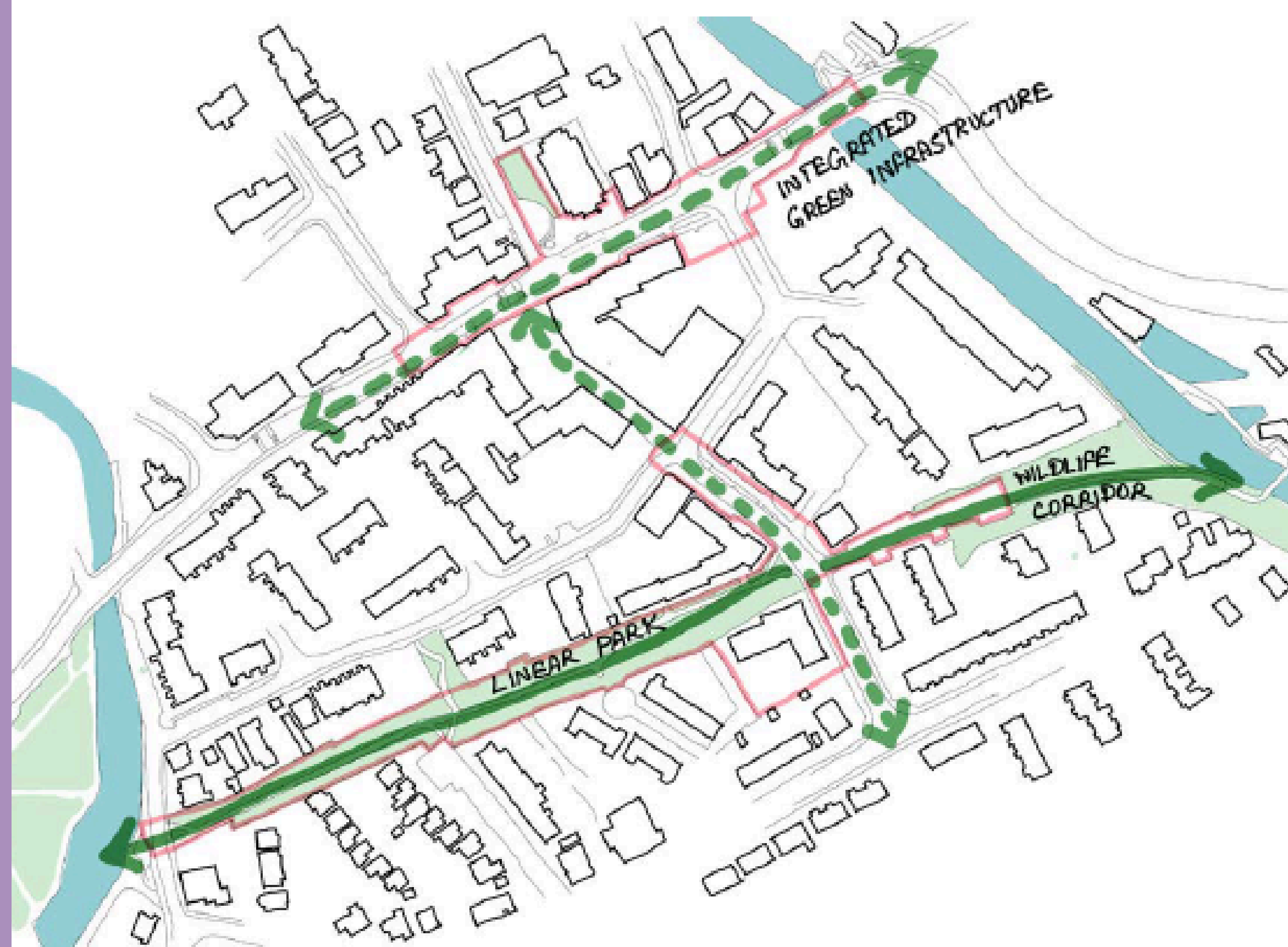
Safer, More Welcoming Spaces - Well-designed paths and open areas create a friendly and safe environment for everyone.

A Space for All Ages - Play areas for kids, quiet spots for relaxation, and green surroundings for everyone to enjoy.

More Trees & Plants - New greenery makes the space more beautiful, provides shade, helps wildlife thrive and promotes biodiversity.

Health & Wellbeing - Being outdoors in green spaces boosts mood, reduces stress and encourages exercise.

Bringing People Together - a great place of families, friends, and neighbours to meet and enjoy the outdoors.



Green links and wildlife corridor



TOWN CENTRE TIPTON REGENERATION PROJECT

Pavements that are currently patched and uneven will be resurfaced.

There will be more and better crossings in the right places, to help people get around safely on foot.

A 20mph zone with raised tables will reduce traffic speeds and the impact of traffic, as well as leading to fewer accidents.

Bus stops on Own Street will be moved slightly so buses can dock safely at the kerbside.

The bus layby will be used for shop deliveries.



Tipton town centre - Owen Street and Union Street - will become a safer, busier and more welcoming place.

New direction signs and wayfinding will encourage visitors and help people who don't know the town find their way around.

Better street lighting, in places, will make the town centre feel safer at night.

Circular walking, running or cycle routes will be signposted to encourage health and fitness.



Information panels and artworks will celebrate or commemorate the town's proud canal heritage and social history.

This will include a permanent memorial to the 14 citizens who lost their lives in the 1916 Zeppelin air raid.



In places, new trees and greenery will be introduced.

Seat and stopping places will be provided in safe and well-lit spots, enabling people to stop, sit and chat against a green backdrop.



The council is also in talks with the owners of Tipton Shopping Centre to jointly secure further investing in:

- Re-letting vacant units and upper floors in the precinct.
- Redecorating shopfronts and shutters.
- Improving lighting through the precinct.
- Trying to secure a regular weekly street market in the main square.



Funded by
UK Government



CONSERVATIVE CLUB

SITE 1 & 2

TIPTON REGENERATION PROJECT

Site 1 & 2

Planning approval was granted in October 2024 for two 3 / 4 storey apartment blocks, either side of Union Street. When completed, these will provide 55 new units of affordable council housing.



Together, the three sites will add 70 units of much-needed affordable council housing.



Conservative Club, Site 3

In January 2025 a planning application was submitted for the site of the former Conservative Club in Union Street, which is now owned by the council. The outcome should be known in May 2025.

The former club, which is locally Listed as a heritage asset, is proposed to be retained and converted into council apartments subject to planning and viability. A three-storey new build extension is planned on land at the rear, In all the development will provide 15 affordable apartments for social renting.

The site is directly opposite block 2. Both schemes will overlook the former Tipton Green Branch Canal, now a walkway.

