



Sandwell Community Safety Strategy 2022-2026



'ensuring that the communities of Sandwell feel safe, protected and confident in their homes and neighbourhoods'



Introduction

The Sandwell Community Safety Strategy outlines our plans for 2022 – 2026, working as a partnership to ensure that the communities of Sandwell feel safe, protected and confident in their homes and neighbourhoods.

The plan is introduced by Chief Superintendent Ian Green who is the Chair of the Safer Sandwell Partnership Police and Crime Board and Councillor Bob Piper the cabinet lead for Community Safety, who help set the context for the strategy, outline key progress, challenges and ambitions for the next 5 years.

The Community Safety Partnership in Sandwell have been working hard to get a consistent, co-ordinated approach to violence, abuse, exploitation, crime and anti-social behaviour, focusing on prevention and where needed reducing offending and serious organised crime.

Throughout the strategy, you will see some of the examples of current approaches, projects and initiatives that have been implemented during the last 3 years and areas of strengths and good practice.

You will also see some of the data and figures for crime in the region. Nationally there has been a 12% increase in total recorded crime and Sandwell has followed similar trends, with some areas being higher or lower than national averages.

What is important is context, behind every figure is a story, and an individual,. We want every person in Sandwell to feel safe, protected and confident in their own homes and their neighbourhoods and some of the work we have undertaken over the last 3 years to support this ambition includes:

- Raising awareness of crime, violence and exploitation in our communities, so our communities know how to recognise such offending, can respond and seek support as required.
- Training and educating young people in schools in protective behaviours, to understand signs of abuse, violence and exploitation.
- Equipping professionals to recognise and respond to a wide range of violence, abuse, exploitation crime and anti-social behaviour,.
- Encouraging a trauma informed approach, helping individuals to recognise the impact of trauma and respond in sensitive ways
- Targeted interventions to respond to a range of forms of violence, abuse, exploitation, crime and anti-social behaviour

The plan sets out clearly our main priorities for the next five years and some key objectives to work towards, which can be summarised as:

Priority 1	Priority 2	Priority 3
Prevent Violence and Exploitation	Reduce Offending, Reoffending and Serious Organised Crime	Prevent and Reduce Crime and Anti-Social Behaviour
<p>Priority areas include:</p> <ul style="list-style-type: none"> • Prevention of Public Place Violence • Under 25 violence • Domestic Abuse • Sexual Assault and Abuse • Modern Slavery • Child Exploitation 	<p>Main priorities include:</p> <ul style="list-style-type: none"> • Reducing Adult Reoffending • Reducing Youth Reoffending • Serious Organised Crime • County Lines 	<p>Main priorities include:</p> <ul style="list-style-type: none"> Reducing Hate Crime Reducing Crime Reducing Anti-Social Behaviour
<p>Cross Cutting Priority 1: Protect and Support Vulnerable Victims Cross Cutting Priority 2 Tackling Substance Misuse – saving lives and reducing crime Cross Cutting Priority 3: Serious Violence Duty</p>		

Community Safety Vision

To ensure that the communities of Sandwell feel safe, protected and confident in their homes and neighbourhoods



I am pleased to be able to update you on Sandwell's new Community Safety Strategy 2022-26. The multi-agency Safer Sandwell Partnership Police and Crime Board understands that issues of crime and community safety are very complex and require an integrated partnership response. Over the past 3 years we have developed our approach around these three key themes:

- The prevention of violence and exploitation
- Reducing offending, reoffending and serious organised crime
- Preventing crime & antisocial behaviour in our Neighbourhoods

While considerable work and progress has been made across these areas there is still always more to be done and these will remain our key priorities for the next 5 year.

There are also three cross cutting priorities, which are integral to the delivery of all of these areas: our commitment to protecting and supporting vulnerable victims; tackling substance misuse to save lives and reduce crime, aligned with the Governments new Drugs Strategy and delivering on the new Serious Violence Duty, which promotes a multi-agency approach to understanding the causes and consequences of serious violence, focused on prevention and early intervention.

Over recent years we have seen the significant challenges that youth violence and exploitation in particular, are having on our communities. These issues have also been exacerbated by COVID and its restrictions on all of our lives. Despite these extraordinary challenges, the partnership has remained robust and focused on delivering activities to enhance community safety across the Borough.

We will continue to deliver these priorities by adopting a place based, public health approach, understanding that violence is preventable and identifying the reasons why people get drawn into crime. We will also support organisations to become trauma aware, to embed such approaches into their practice and to tackle these issues through the adoption of 4P Plans, which aim to: prevent violence, abuse and exploitation; protect those affected; reduce harm and pursue those who perpetrate these offences.

Delivery of these priorities will be led by the Community Safety Partnership through a number of work streams involving the right partners (including community leads and third sector organisations) to influence service delivery and improvements. This 5-year plan is focused on current and future threats and will be reviewed regularly to ensure it remains fit for purpose as we tackle new emerging threat areas and complex vulnerabilities across our communities. This approach ensures the flexibility to predict and respond to any emerging trends in the fast paced and ever changing arena that is community safety.



Chief
Superintendent
Ian Green

Chair of the Safer Sandwell
Partnership Police Crime Board

Community safety is a key priority for Sandwell Metropolitan Borough Council; tackling crime, ASB and exploitation to ensure our communities are and feel safe in their homes and neighbourhoods. As such it underpins much of our Corporate Plan; Big Plans for a Great Place. This Strategy builds on the work undertaken over the past 3 years and provides a direction of travel for the next 5 years

Community safety is not something that can be tackled by any single agency; it requires good and effective partnership work. In Sandwell this work is led by our Safer Sandwell Partnership Police and Crime Board, working collaboratively with Sandwell's 4 other strategic boards. Much of this work is cross cutting and we have proactive and innovative partners across all sectors who are committed to reducing opportunities for crime to get a foothold in the Borough.

Involving those who live here, or come into the Borough for work or education, to help us develop our approaches has been central to developing this strategy and we have conducted a range of surveys and other interactions to understand what makes people feel safe and how we can build awareness and resilience to help achieve this.

We have good links with regional partners including the Office of the Police and Crime Commissioner, The Violence Reduction Unit and the West Midlands Community Safety Partnership. Our strategy recognises that crime often extends beyond geographic boundaries and through ensuring alignment with that of these regional partners we can ensure that we maximise the resources available to tackle these issues.

Over the past three years we have strengthened our approaches to Community Safety, working with partners to tackle violence and exploitation, to better support those experiencing domestic abuse, hate crime and ASB and have become a national exemplar of good practice for our modern day slavery work. These achievements are celebrated in this strategy, however there is a recognition and strong commitment to continue to address crime and disorder across the Borough.

The ambition going forward is for swifter information flow, earlier identification and support for those at risk, increased involvement and co-production with communities and a reduction in the risk of residents being victimised. The Safer Sandwell Partnership also recognises the unprecedented and significant impact across all our communities, businesses and partnerships brought about by Covid19. The impact of this will continue to impact upon us for the foreseeable future but despite the pandemic the partnership has continued to meet and progress its many and varied workstream to ensure that we continue to address these issues and work collectively to support all our residents including some who are amongst the most vulnerable in society.



Councillor
Bob Piper

Cabinet Member for Community
Safety, Sandwell Metropolitan
Borough Council

Community Safety Strategy - Plan on a Page

	Priority 1: Prevent Violence and Exploitation	Priority 2: Reduce Offending, Reoffending and Serious Organised Crime	Priority 3: Prevent and Reduce Crime and Anti-Social Behaviour
Priority areas include	<ul style="list-style-type: none"> ✓ Prevention of Public Place Violence ✓ Domestic Abuse/ Sexual Assault and Abuse ✓ Violence where victims and offenders under 25 ✓ Child Exploitation ✓ Modern Slavery ✓ Preventing Extremism 	<ul style="list-style-type: none"> ✓ Reducing Adult Reoffending ✓ Reducing Youth Reoffending ✓ Serious Organised Crime ✓ County Lines 	<ul style="list-style-type: none"> ✓ Reducing Hate Crime ✓ Reducing Crime ✓ Reducing Anti-Social Behaviour
Objectives	<ul style="list-style-type: none"> ✓ Ensure robust, effective victims pathways, support and responses are in place ✓ Use data and analysis to develop an understanding of each type of violence, abuse and exploitation ✓ Understand and further embed a trauma informed approach ✓ Ensure effective training is in place to continue to educate and raise awareness of violence, abuse and exploitation ✓ Equip our young people / future adults to stay safe and make positive choices 	<ul style="list-style-type: none"> ✓ Support offending pathways ✓ Management of high-risk offenders and targeting of key cohorts to reduce rates and seriousness of offences committed ✓ Continue to strengthen and develop partnership approaches around tackling serious organised crime ✓ Confirming and being able to clearly articulate the Boroughs approach to prevention and diversion as it relates to youth crime 	<ul style="list-style-type: none"> ✓ Increase community awareness of how to prevent crime and maintain and/or improve safety ✓ Strengthen our approaches to tackling ASB ✓ Embed and build upon our approaches to tackling hate crime ✓ Better informed tasking and resource deployment ✓ Enhance community safety on our high rise estates ✓ Engage with our communities to help us work together in partnership to tackle crime and ASB
Strategy	<ul style="list-style-type: none"> ✓ As part of the 'Protect' strand of the PoVE Plan ensure current victim pathways are reviewed and are working ✓ Ensure victim pathways are incorporated into training plans ✓ Ensure regional approaches in place through close working relationships with the OPCC and WMVRU. ✓ Ensure a robust dialogue and support from the data and analysis sub group from the Violence Reduction Unit (VRU) ✓ Enhance data sets to measure, monitor and review all priority areas of violence, exploitation and abuse ✓ Review how effective trauma informed training has been ✓ Develop resources to support trauma informed practice in relation to violence, abuse and exploitation ✓ Develop a Prevention of Violence, Exploitation and Abuse Training Plan ✓ Develop a training data set including evaluation data ✓ Encourage and support funding bids to support priorities 	<ul style="list-style-type: none"> ✓ Strengthen pathways to prevent the cycle of reoffending ✓ Embedding new commissioned services to support offenders ✓ Embed new Integrated Offender Management ✓ Review ways of working with domestic abuse perpetrators/sexual violence/abuse ✓ Strengthen and develop the organised crime response through the OCG partnership ✓ Raise awareness of serious organised crime and organised criminal gangs with partners ✓ Development of a model which will provide early identification and interventions preventing offending and reoffending – with a particular emphasis on youth offending ✓ Specific focus on understanding data in relation to over-represented children 	<ul style="list-style-type: none"> ✓ Enhance and promote community safety and crime prevention information on the Council website ✓ Distribute community safety and crime prevention materials and resources on priority issues identified ✓ Development of a new council wide ASB Policy and new ways of working ✓ Co-produced Service Standards for anti-social behaviour ✓ Review and update the partnership Hate Crime Plan ✓ Strengthen engagement with communities ✓ Review and develop data sets and a new dash board ✓ Improve intelligence gathering ✓ We will work in partnership with Housing colleagues to deliver the CCTV / Concierge Services upgrade and expansion programme across our high-rise estate

Cross cutting priority 1: Protect and support vulnerable victims of abuse, violence, exploitation, crime and anti-social behaviour

Cross cutting priority 2: Tackling Substance Misuse – saving lives and reducing crime

Cross cutting priority 3: Serious Violence Duty

Priority 1: Prevent Violence and Exploitation

Over the past three years, we have worked to develop a holistic response to preventing, violence, abuse and exploitation which includes:

- Developing comprehensive training programmes to educate professionals on how to identify and respond to a range of violence, abuse and exploitation, including domestic abuse, modern slavery, and child exploitation
- We have developed and strengthened early interventions including a new Child Exploitation Hub who are leading the way in responding to child exploitation, with a 50% reduction in such offences reported to the police over the past 3 years
- We have undertaken targeted initiatives to address incidents of knife crime, training and educating young people, using proactive stop and searches and other knife crime initiatives. This proactive work means we have seen an increase in recorded knife crime and weapons seizures but we have intervened at the earliest juncture
- We have continued to deliver interventions throughout the pandemic and national lock downs. This included being proactive in responding to national increases in domestic abuse, ensuring effective interventions remained in place locally
- Proactive work around modern slavery, educating communities to recognise and respond to signs and concerns.
- Targeted communications to our communities to raise awareness around reporting

What are residents telling us?

143 people responded to our Sexual Abuse and Assault Survey carried out in 2021

- 1 in 3 said they had experienced sexual abuse or assault
- 51.2% said the abuse or assault took place in West Bromwich
- When asked what would make them feel safer, respondents told us – awareness raising & education, safe spaces, visible security/police presence

How will we respond?

We have worked to increase reporting for a number of types of violence and exploitation, and need to continue with raising awareness of these crimes and training and educating professionals and our communities.

The PoVE Strategy and Plan will be completed to ensure effective plans are in place to prevent violence and exploitation occurring, protect victims and pursue offenders.

From the Sexual Abuse and Assault Survey, 51.2% said the incidents took place in West Bromwich. We have been successful in obtaining Safer Streets funding to tackle violence against women and girls and are delivering a place based project in West Bromwich..

Objectives	Strategy
Ensure robust, effective victims pathways, support and responses are in place	<ol style="list-style-type: none"> 1. As part of the 'Protect' strand of the PoVE Plan ensure current victim pathways are reviewed and are working 2. Ensure victim pathways are incorporated into training plans
Use data and analysis to develop an understanding of each type of violence, abuse and exploitation	<ol style="list-style-type: none"> 1. Ensure a robust dialogue and support from the Data and Analysis Sub Group from the VRU 2. Enhance data sets to measure, monitor and review all priority areas of violence, exploitation and abuse
Understand and further embed a trauma informed approach	<ol style="list-style-type: none"> 1. Review how effective trauma informed training has been 2. Develop resources to support trauma informed practice in relation to violence, abuse and exploitation
Ensure effective training is in place to continue to educate and raise awareness of violence, abuse and exploitation	<ol style="list-style-type: none"> 1. Develop a Prevention of Violence, Exploitation and Abuse Training Plan 2. Develop a training data set including evaluation data

Priority 2: Reduce Offending, Reoffending and Serious Organised Crime

Reducing Offending, Reoffending and Serious Organised Crime was a new priority set in the 2019 strategy. Over the last 3 years we have worked to develop the new Board Sub group who oversee and develop this area of work. Some of the main highlights include:

- Development of the Black Country Reducing Reoffending Strategy. The strategy outlines the strengthened commitment of partners to work jointly, to unblock barriers and to reduce reoffending
- Further development of the 7 pathways out of offending, ensuring robust support is in place for offenders.
- Working to reduce reoffending rates for young people, which in Sandwell have reduced from 47.55% to 42.64%
- While we have seen an increase in under the influence violence crimes, our award winning Blue Light project has worked with treatment resistant drinkers and has demonstrated a 74% reduction in reoffending and 82% reduction in the cost of crime
- We have worked to get upstream in addressing organised crime groups and now have 8 mapped groups in Sandwell where the partnership is proactively intervening and disrupting their activities.
- We recognise the importance of listening to the voice of our communities and have carried out a number of consultations over the last 3 years which have all provided valuable input into this new strategy

What are residents telling us?

It is important that we listen to the voice of the community, we carried out a community safety survey in 2021, we had 177 residents responded who told us that their top concerns in relation to violence, abuse and crime are:

- Drug Dealing
- Youth Disorder
- Burglary
- Violent Crime

How will we respond?

We will continue to take a robust partnership approach and encourage communities to get involved in helping to tackle these issues.

We will also seek to increase understanding of serious organised crime across the region.

Half of acquisitive crime, burglary and robbery are caused by substance misuse. We will be ensuring our strategies are aligned to the Government's Drug Strategy

Objectives	Strategy
Support offending pathways	<ol style="list-style-type: none"> 1. Strengthening pathways to prevent the cycle of reoffending 2. Embedding new commissioned services to support offenders
Management of high-risk offenders and targeting of key cohorts to reduce rates and seriousness of offences committed	<ol style="list-style-type: none"> 1. Embed new Integrated Offender Management 2. Review ways of working with domestic abuse perpetrators/sexual violence/abuse
Continue to strengthen and develop partnership approaches around tackling serious organised crime	<ol style="list-style-type: none"> 1. Strengthen and develop the organised crime response through the Organised Criminal Gangs (OCG) partnership 2. Raise awareness of serious organised crime and organised criminal gangs with partners
Confirming and being able to clearly articulate the Boroughs approach to prevention and diversion as it relates to youth crime	<ol style="list-style-type: none"> 1. Development of a model which will provide early identification and interventions preventing offending and reoffending – with a particular emphasis on youth offending 2. Specific focus on understanding data in relation to over-represented children

Priority 3: Prevent and Reduce Crime and Anti-Social Behaviour

Throughout the last three years we have really focused our efforts to adopt a consistent approach to prevent and reduce crime and anti-social behaviour. Some of our key achievements have included:

- Successful reintroduction of Town/Borough Tasking to bring partners together to problem solve and tackle crime and anti-social behaviour
- Ongoing service delivery throughout the Covid pandemic including increased enforcement in relation to Covid breaches
- The introduction of a dedicated ASB reporting portal to ensure reported ASB reaches the correct agency first time wherever possible
- Enhanced Reporting Metrics covering Domestic Abuse and Hate Crime enabling better drilldown in relation to figures, areas, trends and responses
- In 2019/20, Sandwell Council's ASB Team became the first Local Authority team in the country to meet the PLEDGE Standard for it's policy, practice and use of the ASB Community Trigger
- 2020/21 also saw the development of a new Noise Nuisance Triage Pilot, which made the ASB Team's 'Noise App' tool, available to selected Sandwell Locals staff to enable more timely interventions
- Boroughwide PSPOs covering Dog Fouling and Alcohol were renewed for a further 3 years along with the West Bromwich Town Centre one.

What are People telling us?

177 residents responded to the 2021 Community Safety Survey. We asked about personal experiences of anti-social behaviour and crime in Sandwell

- 77.4% (137) stated that they either been the victim or witness of this
- 60 respondents had reported to the police
- 71 of respondents said they had reported to Sandwell Council
- 78% (43) were not satisfied with how their reports were dealt with

How will we respond?

- More than half of the people who have witnessed or experienced crime or ASB had not reported to the police. We need to continue to raise awareness of how to prevent crime and improve safety.
- It is difficult to measure data and get a true reflection on reductions in total recorded crime due to the national lock downs.
- With 78% of respondents stating they are not satisfied with how their reports were dealt with, we need to strengthen our approaches tackling these issues and engaging with our communities to develop trust and ensure positive outcomes are shared.

Objectives	Strategy
Increase community awareness of how to prevent crime and maintain and/or improve safety	<ol style="list-style-type: none"> 1. Enhance and promote community safety and crime prevention information on the Council website 2. Distribute community safety and crime prevention materials and resources on priority issues identified
Strengthen our approaches to tackling ASB	<ol style="list-style-type: none"> 1. Development of a new council wide ASB Policy and new ways of working 2. Co-produced Service Standards
Embed and build upon our approaches to tackling hate crime	<ol style="list-style-type: none"> 1. Review and update the partnership Hate Crime Plan 2. Strengthen engagement with communities
Better informed tasking and resource deployment	<ol style="list-style-type: none"> 1. Review and develop data sets and a new dash board 2. Improve intelligence gathering
Enhance the community safety of our high rise estates	<ol style="list-style-type: none"> 1. We will work in partnership with Housing colleagues to deliver the CCTV / Concierge Services upgrade and expansion programme across our high-rise estate

Cross Cutting Priority 1: Protect and Support vulnerable victims of abuse, violence, exploitation, crime and anti-social behaviour

The main vision behind the Community Safety Strategy is to ensure that the communities of Sandwell feel safe, protected and confident in their homes and neighbourhoods.

Sandwell Council has a clear vision for what the Borough should look and feel like by 2030:

In 2030, Sandwell is a thriving, optimistic and resilient community. It's where we call home and where we're proud to belong - where we choose to bring up our families, where we feel safe and cared for, enjoying good health, rewarding work, feeling connected and valued in our neighbourhoods and communities, confident in the future, and benefiting fully from a revitalised West Midlands.

Safe and Protected in your Home

In the 2021 Community Safety Survey we asked about feelings of safety in relation to anti-social behaviour and crime, 34.4% of individuals reported feeling unsafe in their own homes, this is important as we know that abuse, violence, crime and anti-social behaviour can happen in places where we live.

Feeling safe at home and in your community is fundamental to living well and to strong community relationships. Although Sandwell's violent crime and anti-social behaviour levels are similar to the national average, residents are concerned and tell us that feeling safe is the most important thing for them and their families.

Our focus throughout this strategy will be to continue to:

- Drive home key messages of safety and support into the homes of our residents. The Sandwell Herald, Community Safety Bulletin and our website / social media feeds provide a range of safety messages and support options available for victims.
- We will promote awareness raising messages to enable people to report violence, abuse, exploitation, crime and anti-social behaviour.
- We will continue to shine a light on abuse, violence and exploitation that is hidden behind closed doors.
- We will continue to take action where concerns are reported; over the last three years the Anti-Social Behaviour team has responded to 29,638 incidents to reduce or manage ASB.
- We will continue to disrupt locations where modern slavery and exploitation occur, raising awareness and enabling communities to report any possible concerns.
- We will increase community awareness of how to prevent crime and maintain and/or improve safety

Safe and Protected in your Community

In the 2021 Community Safety Survey we asked about feelings of safety from anti-social behaviour and crime, 44.8% of people reported feeling fairly unsafe in public spaces in Sandwell such as in towns and parks

One of the ways people said that they would feel more safe would be to have a physical police presence on the streets. The Police and Crime Commissioner Simon Foster's top priority is to rebuild community policing in the West Midlands. Pledging 450 officers across the region of which 177 have already been recruited.

In addition to make our streets safer we will continue to:

- Work with the Violence Reduction Unit to increase funding into detached youth work with young people.
- Work with the Violence Reduction Unit to pilot a programme called Stepping Together that increases safety for young people on their journey to and from school
- Implement Safer Streets funding to target safety concerns in West Bromwich
- Use our PSPOs (Public Space Protection Orders) covering Dog Fouling, Alcohol, Nitrous Oxide and West Bromwich Town Centre to engage with those involved in anti social behaviour
- Expand our CCTV and concierge service across our remaining high rise estate
- Work closely with WMP on providing CCTV imaging and professional witnessing to secure convictions
- Develop our restorative justice options

Cross Cutting Priority 2: Tackling Substance Misuse – saving lives and reducing crime

The chart below, outlines the governments plan on a page to implement the strategy

What is the data telling us?

- Drug Related Deaths: Sandwell has significantly lower number of drug related deaths than the regional and national average
- Continuity of Care rates (ensuring prompt access to treatment on release from prison): remains above the national average
- Successful Completion rates across all substance types are currently lower than the national average (16.3% v 21.1%), whilst representations (indicative of relapse) are better than the national average.
- Complexity levels of clients accessing treatment is higher than the national average: 63% of presentations to service have high/very high levels of complexity compared with 51% nationally
- A high level of need and unmet need exists locally: Sandwell has a higher estimated rate of drug and alcohol users than national levels; 85% of alcohol dependent individuals and 58% of opiate/crack users are not known to treatment services (both roughly in line with national levels)
- Sandwell remains statistically significantly worse than the national average for both alcohol specific and related mortality (now ranked second worst in the country for alcohol related mortality)

Drug Strategy

The Government has launched a ten-year plan, to combat illegal drugs with ambitions across 3 key areas:

- Breaking drug supply chains
- Delivering a world class treatment & recovery service
- Achieving a generational shift in demand for drugs

How will we respond

This strategy is an ambitious strategy which sits across all areas of preventing and reducing violence, abuse, exploitation, crime and anti-social behaviour.

To ensure this has the right attention, this area of work has been set as a cross cutting priority across all community safety priorities.

We have the Sandwell Drug and Alcohol Partnership (SDAP) with multiple workstreams already in place to address many of these concerns.

We will develop a task and finish group to review the partnership approach and develop an implementation plan for the strategy as a starting point linking this into our new PoVE / RRSOC and place based work streams.

Priority	Break drug supply chains	Deliver a world-class treatment and recovery system	Achieve a shift in the demand for recreational drugs
Why?	Drug supply chains are violent and exploitative, degrading neighbourhoods across the country and internationally	Drug addiction harms individuals and society: deaths have risen to record levels and almost half of acquisitive crime is linked to addiction	Use of recreational drugs has grown over a decade, particularly among young people, risking individual harm and fuelling dangerous markets
How?	We will continue to roll up county lines and strengthen our response across the drug supply chain, making the UK a significantly harder place for organised crime groups to operate	We will invest a further £780 million to rebuild drug treatment and recovery services, including for young people and offenders, with new commissioning standards to drive transparency and consistency	We will strengthen the evidence for how best to deter use of recreational drugs, ensuring that adults change their behaviour or face tough consequences, and with universal and targeted activity to prevent young people from starting to take drugs
Who?	Home Office and MoJ, working with international and intelligence partners, NCA, Border Force, police, courts, prison and probation	DHSC, DLUHC, DWP and MoJ working with NHSE, local authorities, treatment providers and people with lived experience	DfE, DHSC, Home Office and MoJ, working with local authorities, police, education providers, secure facilities and youth services
What?	Within three years: close 2,000 more county lines, disrupt 6,400 OCG activities and deny more criminal assets	Within three years: prevent nearly 1,000 deaths, deliver 54,500 new high-quality treatment places and prevent a quarter of a million crimes	Reduce overall drug use to a new historic 30-year low over the next decade

Cross Cutting Priority 3: Implementing the Serious Violence Duty

There are several asks of Community Safety Partnerships in responding to the Serious Violence Duty

What is the Serious Violence Duty?

- The Duty is a key part of the Government’s programme of work to prevent and reduce serious violence; taking a multi-agency approach to understand the causes and consequences of serious violence, focused on prevention and early intervention, and informed by evidence
- This was introduced as part of the Police Crime, Sentencing and Courts Bill on 9 March 2021 alongside Serious Violence Reduction Orders (SVROs) and Homicide Reviews
- It is a key part of the Government’s wider programme of work to prevent and reduce serious violence; taking a whole-system approach to understand causes and consequences and focus on prevention and early intervention
- The Duty requires organisations to work together to: plan; share data, intelligence and knowledge; generate evidence-based analysis of the problem and solutions to prevent and reduce serious violence in local areas
- There is sufficient flexibility for relevant organisations to work together in the most effective local partnership for any given area

How will we respond

The Serious Violence Duty will help to provide targeted responses to serious violence in Sandwell. Through initial discussions, there have already been some broad principles adopted to take this work forward, which include:

- Rather than build an additional forum, we will use existing local structures including POVE/RRSOC/ Borough Tasking / SSPPCB and build the Serious Violence Duty into these new plans
- We will adopt the World Health Organisation’s definition of a public health approach, which can be summarised as follows:
 - Focussed on a defined population;
 - With and for communities
 - Not constrained by organisational or professional boundaries
 - Focussed on generating long term as well as short term solutions
 - Based on data and intelligence to identify the burden on the population, including any inequalities
 - Rooted in evidence of effectiveness to tackle the problem
 - Develop a small working group to start taking this work forward
 - Build in the three key success measures:
 - homicide rates
 - hospital admissions for knife/sharp object assault,
 - Police recorded knife crime

Objectives	
Understanding local issues:	To identify the kinds of serious violence that occur in our area and so far as it is possible to do so, the causes of that serious violence, the partnership will work together to establish a local ‘strategic needs assessment’ – identifying the drivers of serious violence in the local area and the cohorts of people most affected or at risk. This will require the sharing of relevant data and intelligence held by the individual organisations subject to the duty.
Understanding local issues: Preparation and implementation of a strategy:	In order to prepare and implement a strategy to prevent and reduce serious violence, the partnership must collectively develop a strategy which should outline the multi-agency response that the partnership will take to address the drivers identified in the strategic needs assessment and the work planned to prevent and reduce serious violence in the specified local area. The strategy should set out how the proposed actions will enhance and complement existing local arrangements responding to serious violence.
Review:	The duty requires that once a strategy has been prepared it must be kept under review. The partnership should review the strategy on an annual basis. A review should specifically consider how the interventions and solutions have impacted on serious violence within their area – considering for example crime statistics and accident and emergency data. The review may highlight the need for a refreshed strategic needs assessment and strategy, for example where new and emerging crime types are identified.

The Approach

Sandwell Community Safety Strategy for 2022 - 2026 sets out the approach we are taking to prevent and reduce, violence, abuse, exploitation, crime and anti-social behaviour

Public Health approach

This Means

Understanding that violence is preventable and the reasons why people get drawn into crime

We will do this by:

- ✓ Focusing on understanding the causes of violence,
- ✓ Understanding the reasons why people get drawn into a life of crime.
- ✓ Using data and evidence
- ✓ Asking the people involved "what has happened to you, to get to this point?"

Trauma Informed approach

This Means

Supporting organisations in becoming trauma aware and helping them to begin embedding trauma informed approaches into their practice

We will do this by:

- ✓ Ensuring robust training plans are in place to raise awareness of adverse childhood experiences
- ✓ Embedding trauma informed practice to reinforce the strengths and relationship-based practice many professionals already engage in.
- ✓ Supporting organisations to be trauma informed organisations
- ✓ Continuing our journey to establish consistency in the use of a trauma-informed approach

Four P approach

This Means

We will prevent violence, abuse and exploitation, protect those affected, reduce harm and pursue those who perpetrate

We will do this by:

- ✓ Maximising prevention opportunities and targeting resources to be effective
- ✓ Ensure robust, effective victims pathways, support and responses are in place
- ✓ Maximising opportunities to disrupt locations where there is violence, abuse and exploitation and use joint enforcement opportunities
- ✓ Reducing the harms caused by violence, abuse and exploitation through improved victim identification and support

Our engagement with local people and partners in developing this Community Safety Strategy has been invaluable in helping the partnership to shape our responses to ensure communities of Sandwell “feel safe, protected and confident in their homes and neighbourhoods”

Consultations carried out included:

- Annual WMP Community Safety Partnership Survey
- SSP Community Safety Survey (2021)
- Shape Survey (2020)
- Young Peoples Hate Crime Survey (2020)
- Sexual Abuse and Assault Survey (2021)
- Thank you to everyone who contributed

In the 2021 Community Safety Survey we asked about personal experiences of anti-social behaviour and crime in Sandwell

- 77.4% stated that they either been the victim or witness of this
- 60 respondents had reported to the police
- 71 of respondents said they had reported to Sandwell Council
- 78% were not satisfied with how their reports were dealt with

Review of Young People’s Experience of Hate Crime

- 73 young people responded
- 1 in 4 respondents told us that they had either been a victim or witnessed hate
- 44% told us they had not received any education on hate crime
- 38% told us they had been impacted by online hate

Sexual Abuse & Assault Survey

- 143 people responded
- 1 in 3 said they had experienced sexual abuse or assault
- 51.2% said the abuse or assault took place in West Bromwich
- When asked what would make them feel safer, respondents told us – awareness raising & education, safe spaces, visible security/police presence

In the 2021 Community Safety Survey we asked about feelings of safety from anti-social behaviour and crime

- 28.7% of people felt fairly unsafe and 5.7% very unsafe at home
- 44.8% of people reported feeling fairly unsafe in public spaces in Sandwell such as in towns and parks
- 40.3% of individuals expressed feeling very worried about becoming the victim of a crime in Sandwell
- 40% felt worried about organised crime and exploitation in Sandwell
- 24% of individuals perceived there to be an ineffective response to anti-social behaviour and crime by authorities

In the 2021 Community Safety Survey we asked about what would help you feel safer from anti-social behaviour and/or crime in Sandwell,

- 91.5% respondents asked for an increased police presence
- More CCTV (69.5%) was the second most common solution
- Well maintained estates & streets (59.9%) were third

In the Community Safety Survey we asked about priorities for the new Sandwell Community Safety Strategy

The top 5 issues highlighted were:

- Drug dealing (10.7%)
- Youth disorder (9.3%)
- Burglary (7.4%)
- Violent crime (7.2%)
- Littering/fly tipping (5.8%)

“Frankly the most violent and serious of the crimes above should always be top of the list but if you address the social issues also as a priority I'd hope that the number of serious crimes decreases”

“Difficult to pick top 5 as some of these such as DA, stalking and harassment and rape or sexual assault, forced marriage, slavery and hate crime should all be priorities but not necessarily a safety priority for the general vote as there is a smaller percentage that would experience these types of behaviours and therefore require those specific services”

Place Based Responses to Community Safety

Tipton

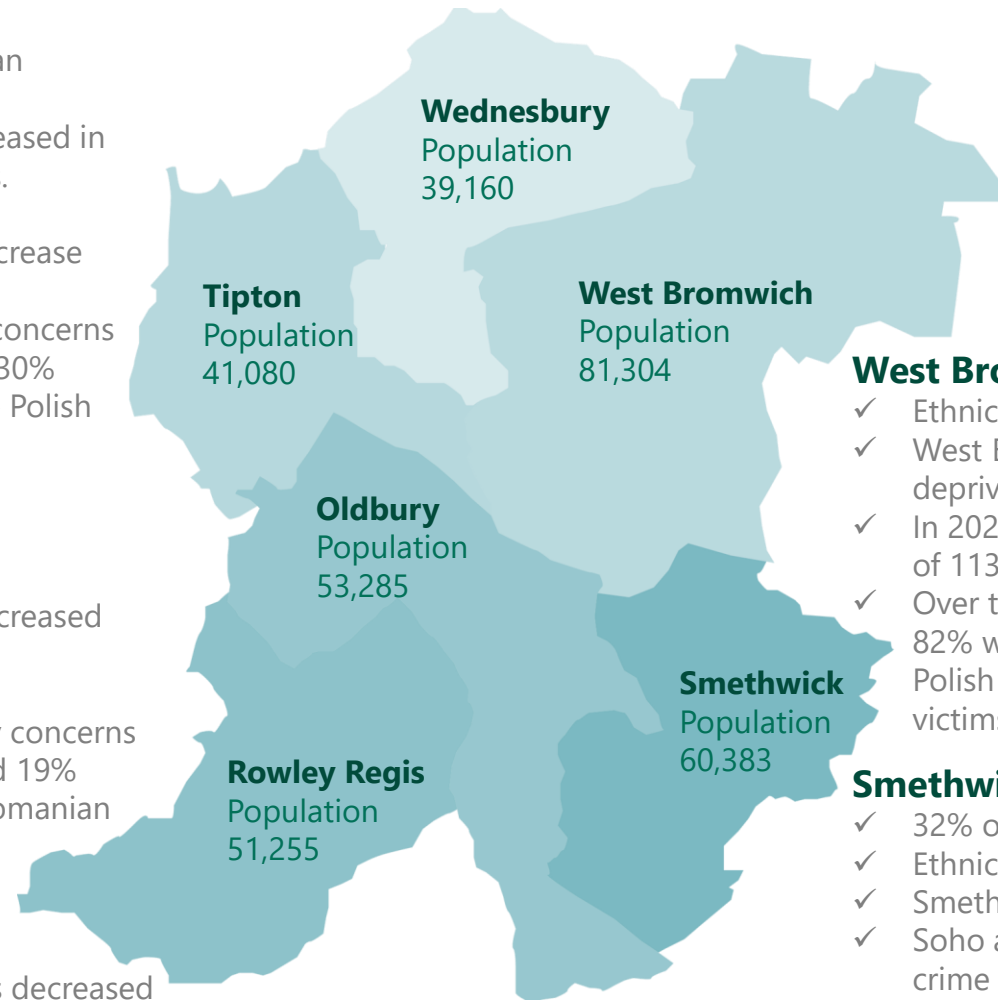
- ✓ 35% of children live in poverty
- ✓ Tipton is young with a higher than average proportion of young residents and lower than average proportion of older residents
- ✓ In 2020-21 overall total recorded crime increased in Tipton Town with an additional 246 offences.
- ✓ 106.6 crimes per 1000 people
- ✓ Stalking and Harassment had the highest increase with 200, (63.2%), additional offences
- ✓ Over the last 3 years, of 31 modern slavery concerns reported 61% were labour exploitation and 30% criminal exploitation with 24% of victims are Polish

Oldbury

- ✓ 26% of children live in poverty
- ✓ In 2020-21 overall total recorded crime decreased with a reduction of 311 offences.
- ✓ 80.9 crimes per 1000 people
- ✓ Over the last 3 years, of 41 modern slavery concerns reported 72% were labour exploitation and 19% criminal exploitation. 69% of victims are Romanian

Rowley Regis

- ✓ 28% of children live in poverty
- ✓ In 2020-21 overall total recorded crime has decreased with 8 less offences.
- ✓ 80.4 crimes per 1000 people
- ✓ Over the last 3 years of 26 modern slavery concerns reported 63% were labour exploitation and 24% criminal exploitation



Wednesbury

- ✓ 32% of children live in poverty
- ✓ The population is slightly older than the Sandwell average
- ✓ In 2020-21 overall total recorded crime has increased with 188 additional offences
- ✓ 92.5 crimes per 1000 people
- ✓ Over the last 3 years, of 24 modern slavery concerns reported, 62% were labour exploitation and 32% criminal exploitation. 50% of all victims were Albanians

West Bromwich

- ✓ Ethnic Minorities account for 35.5% of the population
- ✓ West Bromwich's deprivation score puts it in the 20% most deprived areas of England
- ✓ In 2020-21 there was an overall increase in total recorded crime of 113 offences.
- ✓ Over the last three years, of 98 modern slavery concerns reported 82% were labour exploitation and 10% criminal exploitation. Polish and Romanian communities had the highest incidences of victims with 27% each respectively

Smethwick

- ✓ 32% of children live in poverty
- ✓ Ethnic minorities account for 55.9% of the population.
- ✓ Smethwick has the highest proportion of young people
- ✓ Soho and Victoria had just under 50% more than the average crime levels
- ✓ In 2020-21 overall total recorded crime decreased in Smethwick with a reduction of 305 offences
- ✓ Over the last 3 years, of 101 modern slavery concerns reported 63% were labour exploitation and 28% criminal exploitation. 49% of all sexual exploitation also occurred in Smethwick. 45% of modern slavery victims are from the Indian population

Priority 1

**PREVENT
VIOLENCE
and EXPLOITATION**



PoVE

(Prevention of Violence and Exploitation)

The PoVE Sub Group is a strategic Sub Group of the Safer Sandwell Partnership Police and Crime Board. It is responsible for co-ordination of the work of partners to ensure that the Safer Sandwell Partnership Community Safety Strategy and Action Plan for Prevention of Violence and Exploitation (PoVE) is effectively delivered in close co-operation with Sandwell's Health and Wellbeing, Adult Safeguarding, Children's Safeguarding and Domestic Abuse Boards.

The partnership group is responsible for directing activities and resources aimed at prevention and early help to address violence and exploitation and overseeing performance against a series of objectives, targets and performance indicators laid out in the Prevention and Violence and Exploitation Strategy & Delivery Plans.

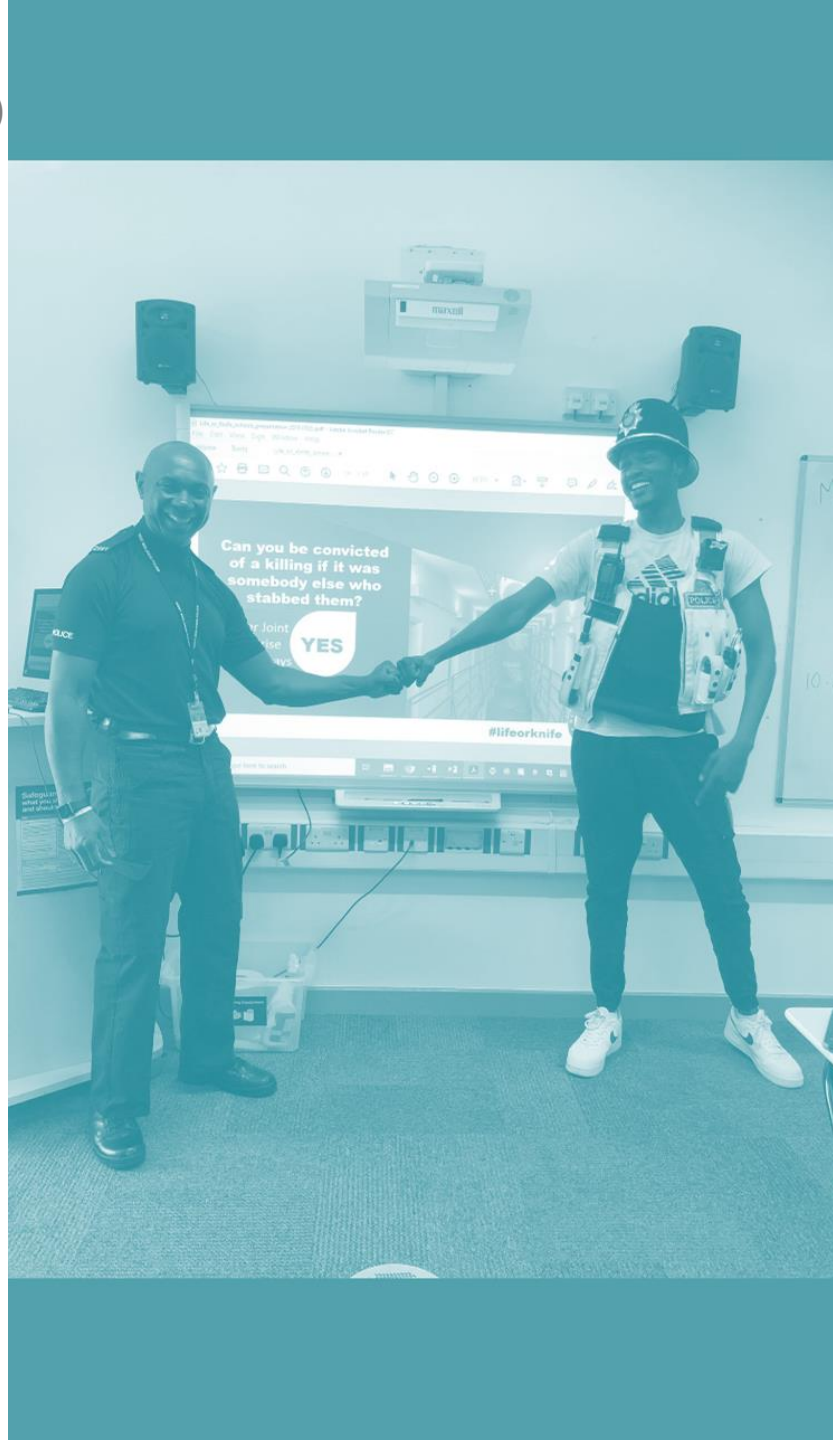
Key Prevention Priorities for PoVE include:

- Prevention of Public Place Violence
- Domestic Abuse
- Knife Crime
- Violence where victims and offenders under 25.
- Child Exploitation
- Modern Slavery

There are several cross-cutting priorities which have an additional focus including

- Addictive Behaviours
- Trauma informed practice
- Preventing radicalisation

We will prevent violence, abuse and exploitation, protect those affected, reduce harm and pursue those who perpetrate abuse, violence and exploitation



Progress

The PoVE Plan was developed with partners and is regularly reviewed at each PoVE meeting. Key achievements over the past 12 months have included:

Developing a regional approach to preventing violence, abuse and exploitation

- Embedded the VRU governance structures locally across all 4 Boards
- Agreed effective information exchange between the regional Boards and the LA / Partnership Boards.
- Aligned a range of joint priorities across the 4 regional Boards

Developing a Sandwell Prevention of Violence, Abuse and Exploitation Strategy and Plan

- The strategy and plan were both launched in April 2020 and underpin Sandwell's partnership approach to preventing and reducing violence, abuse and exploitation

Understanding the strategic landscape

- We worked with the Violence and Vulnerability Unit to undertake a Locality Review to help develop the response to violence, abuse and exploitation.
- VRU Regional Exploitation Framework – this was sent for consultation; the final framework is being pulled together and will need to be embedded across Sandwell

Other developments during the year have seen the VRU establish their 4 Boards: Domestic Abuse; Rape & Serious Sexual Offences, Human Trafficking & Modern Slavery and Criminal Exploitation & Missing. Sandwell is represented on all 4 which feed into our Prevention of Violence and Exploitation Work.

In October 2020 the VRU appointed a Community Navigator role to Sandwell to better link the VRU into local areas. The Navigator sits within the VRU and the Community Safety Team and one of her key tasks has been to co-ordinate a pilot project to reduce opportunities for violence and exploitation in one of Sandwell's Impact Areas. This developed into the Smethwick Against Violence Initiative (SAVI) which brought together a range of partners, including new groups, to develop resources and information to reduce opportunities for violence and exploitation and hate crime in this area

Local Picture

Between 2017 – 2020 Sandwell has seen a :

- 63% increase in domestic abuse reported to the police
- 55% increase in high risk domestic abuse

April 2018 - March 2021 data

- Sandwell MARAC offered support to 1973 high risk domestic abuse victims
- Black Country Women’s Aid were funded to provide specialist support to at least 5466 victims of domestic abuse and their families
- 422 victims supported through the A&E IDVA service funded through the OPCC
- Sandwell and West Birmingham CCG have now fully trained a total of 46 GP practices
- 505 victims of sexual violence and abuse supported by BCWA
- 24,118 children have been referred to MASH due to domestic abuse
- Women and girls in our community are at disproportionate risk of a wide range of crimes

Domestic Abuse

In the year ending March 2019, an estimated 2.4 million people aged 16 to 74 years reported experiencing domestic abuse. The true figure is much higher. Domestic abuse can happen to anyone but is disproportionately perpetrated by men towards women and children.

According to the ONS, figures indicate that the number of domestic abuse-related crimes in England rose by 6% in the year ending March 2021. In Sandwell we have seen a 30% increase in Domestic Abuse reports compared to data last year and a 10% increase in high risk MARAC cases. Due to the volume of referrals, an extra MARAC was held in February 2021 to deal effectively with the volume of cases being referred.

Nationally, there has been a 22% increase in calls to the National Domestic Abuse Helpline in England. We have also seen this demand locally with a 52% increase in contact with domestic abuse support services compared to last year and a 4% increase in referrals to Sandwell Children’s Trust.

Domestic abuse continues to be a priority for the Partnership and the work we have undertaken this year demonstrates how the partnership has managed increased demands, continued service delivery despite the he impact of Covid and responded to national policy changes.

In the 2019-21 strategy the following objectives in relation to domestic abuse were agreed

What We Said	What we Did
We will build on the success of the Domestic Abuse Strategic Partnership (DASP), giving more focus to several ‘hidden’ types of violence and exploitation	Domestic abuse continues to be a high priority, DASP is now a statutory board and leads the way in the response to DA in Sandwell.
Establish the DRIVE programme to change the behaviour of perpetrators	The DRIVE programme, funded by the OPCC was delivered in Sandwell with 53 perpetrators completing work in 2020-21.
Review arrangements for MARAC (Multi Agency Risk Assessment Conference)	A regional review and relaunch of MARAC took place in 2019. There has been a 10% increase in high risk cases, with extra MARAC meetings held to meet the demand

2018 – 2021 Achievements

- Completion and publication of 3 Domestic Homicide Reviews and delivery of Learning Events
- Several new groups established to tackle specific abuse including Child to Parent Abuse and Sexual Assault & Abuse.
- FGM multi-agency procedures agreed and published and promoted through a community launch event
- 2410 professionals attended domestic abuse training
- £841,000 of New Burdens Funding secured

2022 – 2026 priorities

- Production of new Domestic Abuse Safe Accommodation Needs Assessment and summary
- Development of new DA Strategy 2021-24
- Implementation of Delivery Plan for support in safe accommodation
- 3-year DA/SAA training programme to be commissioned 2022-25
- Commission bespoke community-based support for children experiencing DA

Learning

★ Coercive and controlling behaviour is a key factor in domestic abuse

★ Abusers often use counter-allegations, including allegations of child abuse/neglect, to divert attention from their own abusive behaviour

★ Children lived in family where 20 years of DA wasn't reported or disclosed

★ Importance of encouraging adult victims to report / seek help

★ Looking for potential signs of DA in both adults and children



What we have done following these cases?

- We have actively promoted domestic abuse awareness via the annual '16 Days of Action Against Domestic Abuse' campaign, sharing regular messages on social media about different types of abuse and how to seek support, Safer 6 campaigns; Adult Safeguarding weeks as well as regular messages throughout the year
- We have developed a Learning from DHRs training module and multi-agency domestic abuse training sessions
- We have produced a domestic abuse information leaflet for friends, family and work colleagues
- We have produced information on domestic abuse victim support services in various languages
- We produced and launched 'Tina's Story' a video to promote awareness of domestic abuse and prevent further domestic homicides

Learning from Domestic Abuse Homicides

A Domestic Homicide Review (DHR) is a multi-agency review of the circumstances in which the death of a person aged 16 or over has, or appears to have, resulted from violence, abuse or neglect by a person to whom they were related or with whom they were, or had been, in an intimate personal relationship, or a member of the same household as themselves. Since 13 April 2011 there has been a statutory requirement for local areas to conduct a DHR following a domestic homicide that meets the criteria.

Over the last three years, 3 Domestic Abuse Homicides Reports have been published in Sandwell:

Miriam

- 'Miriam was a 26-year-old mother of three children who was killed by her ex-partner in 2015. The relationship began when she was 14 and he was 50. A key theme of the DHR was how professionals did not recognise how the relationship began, including potential CSE, and the impact of this on the family dynamics.

Eve.

- 'Eve' was a 54-year-old woman who was murdered by her long-term partner. He was jailed for a minimum of 24 years for her murder. She was a mother and grandmother who had struggled to provide a loving home to her children and step-children despite her partner's abusive and controlling behaviour. During their twenty year relationship, she experienced repeated physical, emotional and psychological abuse but did not report him to the Police for fear of his retribution on her and their family. Read her story [here](#)

AB

- AB was murdered by her partner in 2017 who then committed suicide. The review highlighted the importance of professionals and others being able to recognise coercive and controlling behaviour and know what to do and where support can be accessed for victims-survivors

Integrated management of domestic abuse serial perpetrators in Sandwell is working well, data submitted to the Home Office demonstrates a 87% reduction in repeat domestic abuse incidents and an 86% reduction in the cost of domestic abuse crime for those subject to management.

The DRIVE perpetrator programme reported a 96% reduction in repeat domestic abuse incidents and a 94% reduction in the cost of crime.

<p>Local Picture</p> <p>Since 2015 there have been 3384 recordable offences relating to sexual assault and abuse in Sandwell. (Rape and Serious Sexual Offences (RASSO) data). This includes adult and child victims, with the majority of victims being female. Black Country Women’s Aid’s (BCWA) quarterly reports indicate that after a spike in 2019/20 to 197 referrals, there has been a noticeable decrease to 153 referrals in 2020/21 which could be attributed to the COVID lockdown and victims feeling unable to report. This is backed up by the fact that the majority of referrals (41%) were self-referrals in 2018/19. This decreased dramatically to 29% in 2019/20 and reduced again to 25% in 2020/21.</p> <p>Sexual Assault (88%) and Rape (56%) continues to be the primary reason for referral into BCWA’s Independent Sexual Violence Advisor (ISVA) service. The Children’s and Young People’s Sexual Assault Referral Centre (SARC) supported 46 victims of SAA in the last year specifically in Sandwell, 70% of which were young women and girls. Of all the referrals, 29% were from a minority background. 4% were from LGBTQ community. The Adult SARC were only able to provide West Midlands wide data. They have supported 272 adult victims of SAA from April 20 to Mar 21. 92% of those supported were female. 45% of those were from a minority background. (significantly higher than the percentage of ethnic minority across the West Midlands of 16.5%)</p>	<h1>Sexual Assault and Abuse</h1> <p>Sexual Assault and Abuse are hidden crimes that often go unreported so it is sometimes misleading to rely on police data to estimate the prevalence of the issue. It is estimated that 773,000 adults aged 16-73 experienced Sexual Assault and Abuse in the year ending March 2020.(Crime Survey England and Wales)</p> <p>Nationally sexual assault and abuse disproportionately affects women and girls, with 1 in 5 females estimated to experience sexual assault and abuse from the age of 16 years old and 1 in 25 males estimated to experience sexual assault and abuse within the same age bracket (CSEW, 2018). The prevalence of sexual assault and abuse experienced by children under 16 years is estimated to encompass 7.5% of the current adult population (CSEW, 2020). To caveat this, it is important to recognise that under-reporting means the true prevalence of sexual assault, abuse and exploitation is not fully understood.</p> <p>Currently only 1.4 percent of reported rape offences are prosecuted in England and Wales (Home Office 2020). The difficulties that the criminal justice process faces are starkly seen by the calls for reform and the work ongoing within government.</p>	<p>2018-21 Achievements</p> <ul style="list-style-type: none"> • Multi-agency Sexual Assault & Abuse group established in late 2020 which reports to DASP • SAA needs assessment produced and presented to DASP in Dec 2021 • 2022-25 Strategy drafted – key priorities • Workshop with partners January 2022 to develop implementation plan • FGM Clinic established
	<p>SAA Aims for 2022 -25</p> <p>Victim Pathways - We will provide an appropriate pathway for victims to access support that is effective, robust and follows best practice. We will use victims’ feedback to improve services and outcomes.</p> <p>Tackling Attitudes -We will implement robust preventative measures from early childhood to adulthood</p> <p>Raising Awareness - We will raise awareness of SAA across all partners and ensure that all organisations fulfil their responsibilities to address SAA and provide appropriate responses to victims</p> <p>Challenging Perpetrators - We want perpetrators of sexual assault and abuse to be held accountable for their actions and supported to change their behaviours</p>	<p>2022 - 25 priorities</p> <ul style="list-style-type: none"> • Strategy presented to DASP in March 2022 for approval • Implementation plan 2022-25 developed by SAA group and approved by DASP • Check With Me First campaign rolled out across frontline health professionals • Improved training for professionals around SAA • Work to improve referral pathways between grassroot organisations and specialist agencies

Local Picture

The Sandwell Anti-slavery Strategic Partnership continue to lead the way in responding effectively to modern slavery

SHOP (Slavery and Human Trafficking Operational Partnership) continues to lead the operational response around modern slavery

The year has seen a continued uplift in operational activity, particularly amongst those who are homeless and destitute. 20 partners are consistently at SHOP, sharing intelligence and data to effectively detect, prevent and disrupt modern slavery

Since April 2019 there have been 450 reports of modern slavery in Sandwell

- 1017 potential victims screened
- 306 safeguarding visits completed
- 149 victims referred into the National Referral Mechanism (NRM)
- 247 locations disrupted
- 56 perpetrators arrested
- Sandwell has identified more male victims of modern slavery across the West Midlands region

Modern Slavery

Sandwell's response to modern slavery has continued to develop over the last 12 months and our four main objectives are to:

1. Ensure victim pathways are robust, effective and aligned to best practice
2. Further understand threats, risk and harm modern slavery and human trafficking poses
3. Raise awareness across agencies, businesses and communities, to address modern slavery
4. Disrupt incidents of modern slavery in Sandwell, working collaboratively to target perpetrators

Sandwell's commitment to having designated roles focused on modern slavery and exploitation are really helping to lead the way in this work nationally as reflected in two recent reports: The Anti-Slavery Commissioner's Annual Report and a report on modern slavery partnerships.

[It still happens here: Fighting Slavery in the 2020s Independent anti-slavery commissioner annual report 2019-2020](#)

In June 2019 leaders of the council signed a Modern Slavery Pledge, making a firm commitment to doing everything in our power to make our Borough slavery free.

In the 2019-21 strategy the following objectives in relation to exploitation and abuse were agreed

What we Said	What we Did
We will work closely with Children and Adults Safeguarding Boards and Health and Wellbeing Board to deliver a series of actions to prevent exploitation and abuse	The new Horizons Hub was developed to lead on exploitation for children. A new Exploitation Strategy was developed for children and a regional exploitation framework developed
New co-coordinator will strengthen and join up work to prevent and tackle slavery and human trafficking	The Modern Slavery Programme Manager came into post in December 2018 and developed a plan of work to tackle modern slavery
PoVE Action Plan to be strengthened around child exploitation.	PoVE Action Plans and score cards were further developed, there has been a 50% reduction in child exploitation reports to police

2018 – 2021 Achievements

- Development of Modern Slavery Delivery Plan
- Development of an effective data set to understand the modern slavery landscape across Sandwell enabling development of Town Profiles Council leaders signed a pledge to make Sandwell a Slavery Free Borough
- Embedded a new Slavery Adult Safeguarding Case Conference (SASCC)
- National Modern Slavery Conference on sexual exploitation reached over 1000 delegates
- 241 First Responders trained
- 950 have attended safeguarding briefings on modern slavery

2022 – 2026 priorities

- Review and refresh victim pathway and safeguarding responses for victims of modern slavery
- Review modern slavery training in line with Modern Slavery Training Standards Framework and refresh Modern Slavery Training Plan
- Embed a regional modern slavery dash board and implement locally
- Develop a new Modern Slavery Delivery Plan

Local Picture

Between April 2017 – March 2020 there have been:

- 90056 incidents of public safety or welfare
- 11,393 incidents of violence with injury
- 105 gang related non-crimes
- A 49% increase in reported knife crime
- 764 incidents of knife crime with victims over 18
- 184 incidents of knife crime where the victim is aged 10 – 17 years
- 11 incidents of knife crime where the offender is aged 10 – 17
- 234 incidents of gun crime
- 55 markers for gangs related crimes
- A 21% increase in sexual offences
- A 98% increase in stalking and harassment
- A 42% increase in violence against the person

Prevention of Public Place Violence

Ensuring our communities feel safe, protected and confident in their neighbourhoods is a key part of our vision, and we all need to work together to achieve this.

We have launched three specific place based approaches to help respond to violence, including:

- **SAVI** (Smethwick Anti-Violence Initiative) was set up as part of a place-based pilot to prevent violence in Smethwick funded by the West Midlands Violence Reduction Unit (WMVRU). SAVI is a unique alliance of organisations, each with a commitment to serving disadvantaged, excluded and isolated communities
- **West Bromwich Place Based Pilot**, funded by the VRU, is running with local providers offered the opportunity to attend a training course and engage with the train the trainer programme as part of an accredited mentoring framework. Detached youth work and intensive support to Sandwell College also funded alongside capacity for specialist mentoring and family support, including work with primary schools.
- **Safer Streets Funding Round 3 (focusing on VAWG)**
Home Office Safer Streets funding secured in October 2021 to deliver a place based project in West Bromwich focussing on the prevention of Violence Against Women and Girls (VAWG). The project consists of delivering messages through education working with boys to tackle attitudes and prevent perpetration, one to one mentoring for young people who are displaying sexualised behaviour, interactive theatre productions in schools, bystander training delivered to Sandwell College and some of the businesses in West Bromwich and piloting a safe space scheme in West Bromwich town centre.

Impact Areas are a focus of Tasking and plans were put in place to reduce violence using Project Guardian resources when the team arrived in Sandwell in July 2021 focusing resources in two of Sandwell's impact areas was very successful in a short space of time.

Weekly partnership risk and threat meetings were developed as an opportunity to share intelligence and respond in real time to emerging threats or risk.

2018 – 2021 Achievements

- Full dedication of the Op Guardian Task Force for 10 weeks in 2021
- Knife Arch initiatives introduced across Borough
- Partnership meetings set up to tackle breaches of Covid legislation have helped develop and strengthen working relationships across this area
- Developed and launched Community Safety Licensed Premises Safeguarding Risk Assessment
- Adopted the West Midlands Vulnerable Adults Risk Management procedures

2022 – 2026 priorities

- Delivery of the Safer Streets project
- Support the West Bromwich Town Centre PSPO to engage and work with vulnerable individuals.
- Learn from Operation Guardian and continue to work with the Guardian Task Force
- Develop approaches to public place violence as part of the serious violence duty
- Operational delivery of the stepping together programme

Local Picture

From April 2017 – March 2020

- 184 incidents of knife crime where the victim is aged 10 – 17 years
- 11 incidents of knife crime where the offender is aged 10 – 17
- During Operation Aident County Lines Intensification Week 2021 14 young people were safeguarded
- 73% of people linked to county lines activity between April 2018 and November 2020 were young people aged 25 or under
- 15 to 24 year olds attend A&E following an assault at a rate of 53 per 10,000 of the population, which is higher than any other age group
- 15 to 24 year olds also have the highest rate of inpatient hospital admissions for assault (an indicator of more serious injuries having occurred)

U25 violence

The [VRU Strategic needs assessment](#), analysed a range of different data sources for under 25 violence. One of the recommendations they will be taking forward is to explore opportunities to reduce risks linked to children in care, missing, school exclusion and county lines. Based on the evidence of risk from this assessment and outlined below, the recommendation is to work with Sandwell Local Authority.

- Smethwick and East Sandwell have high rates of hospital admissions for assault with a sharp object
- Police recorded involvement in County Lines from Smethwick and East Sandwell
- Increase in the rate of Children in Care from 70 per 100,000 in 2016 to 109 per 100,000 in 2019
- Much of the Local Authority area showing relatively high in the Risk Index
- Schools with high three-year permanent exclusion rates

In the space of five years, knife crime has more than doubled in the West Midlands, from 1,558 incidents in the year to March 2015, to more than 3,400 in the year to March 2020, according to the Office for National Statistics. The West Midlands has the third highest rate of Knife Crime in England and Wales, with 108 reports per 100,000 population. Sandwell has more incidents in the East of the Borough (especially Smethwick) but also stands out as having above median levels of Violence Against the Person offences in most of the local authority area

Over the last 12 months, there have been a number of initiatives to prevent and reduce under 25 violence, and knife crime which include:

- Working with the Op Guardian Task Force to reduce knife crime
- Supporting Families Against Youth Crime universal support to reduce knife crime
- Community safety funded projects focused on raising awareness in schools
- Universal protective behaviours projects working with 3 local primary schools
- A project run by young volunteers for children aged 12-18 in the Polish community educating them on issues related to hate crime, discrimination, racism, xenophobia
- Funding for projects that support prevention and disruption interventions with young people who have been identified as on the cusp of being exploited and/or entering gang activity
- The Early Intervention Youth Fund project taking a tiered approach through disruption; engagement; diversion and prevention. The providers worked with Youth Offending Service, the Horizons Team, Sandwell Community school and schools across the borough

2018 – 2021 Achievements

- Created a consistent approach for reporting weapons and violent offences
- 5 year reduction plan in place to reduce children taking weapons into schools
- 3 School Liaison Officers allocated to all high schools within the 3 impact areas; overall objective to reduce under 25 violence
- NPU worked closely with the Op Guardian Task Force
- Supporting Families Against Youth Crime universal support to reduce knife crime
- Section 60 Implemented in West Bromwich Town Centre.
- Over 200 young people benefited from the EIFY funding

2022 – 2026 priorities

- Continued schools inputs around knife crime/county lines
- Continued hi-vis patrols in towns with partners
- Develop a five-year strategy to reduce children taking weapons into schools.
- Further embed the weapons and violence pathways in schools
- Delivery of the Step Together pilot in Sandwell focusing on Smethwick and Oldbury

Local Picture

During the last 3 years:

- Sandwell has seen a 50% reduction in reports to the police for child exploitation,
- 1,489 professionals completed training on child sexual exploitation
- 789 practitioners attended exploitation training
- Supporting Families Against Youth Crime programme supported young people in years 6 and 7 in transition from primary to secondary school in two of our impact areas West Bromwich and Smethwick
- Nearly 600 one to one mentoring sessions were delivered to over 120 young people
- 3,000 young people and their carers benefited from universal sessions delivered via assemblies
- 73% of all the people linked to county lines activity between April 2018 and November 2020 were young people aged 25 or under
- In the first year of the launch of the Exploitation Hub,
 - 130 young people were discussed and supported
 - 114 high risk victims received targeted support

Child Exploitation

In response to child exploitation, The West Midlands Criminal Exploitation Board has begun to coordinate partners' responses and approaches to child exploitation and developed a regional exploitation framework to support statutory safeguarding partners in developing and embedding a robust local response to exploitation.

Sandwell Children's Trust has established The Horizons Team to focus on exploitation. It operates a 'Co-Working Plus Model' to help improve practice across the Trust.

This assists with:

- Mapping locations of concern and ensuring information analysis will be more meaningful
- Young people receiving a consistent response from a centralised team that will co-work alongside social workers.
- Manages those at high risk of exploitation and MACE processes for partnership working around vulnerable young people

In the 2019-21 strategy the following objectives in relation to child exploitation were agreed

What we Said	What we Did
We will improve the response to young people at risk of gangs or exploitation	We established a working group to respond to gangs and exploitation, this was a successful piece of work and helped us to adopt early intervention approaches for young people at risk of joining gangs
Develop our approach to children who have experienced ACES	A lot of work has been completed around the trauma informed approach, robust training and now working with the VRU on this area of work
We will explore the concept of a complex safeguarding hub with partners	This work resulted in the development of the Child Exploitation Hub which brings partners together to reduce the impact of exploitation and provide targeted support

2018 – 2021 Achievements

- Early Help Exploitation Champions Group launched
- Successful Hub step downs have increased with young peoples risk levels being reduced
- Multi-agency approaches to Operation Aidant intensification weeks
- Development of Horizons Team to respond to child exploitation
- Launch of an Exploitation Strategy
- 15 schools enrolled in Sandwell Safeguarding Champions programme
- Updating of Project 12, Sandwell's PSHE programme

2022 – 2026 priorities

- Continued Schools inputs around knife crime/county lines
- Continued hi-vis patrols in towns with partners
- Develop a five-year strategy to reduce children taking weapons into schools
- Further embed the weapons and violence pathways in schools
- Continue to improve our response to knife crime
- Embed roll out of Sandwell's PSHE programme Project 12

Local Picture

- 61 individuals vulnerable to Extremism have been supported by Prevent over the last 3 years
- 7036 young people have engaged with Prevent through schools work led by the Prevent Education Officer
- Monthly Prevent Newsletter for partners distributed
- Developed Twitter page – tweeting weekly messages to the wider community
- Delivery of focussed project work to over 2000 children during 2020-21
- Pro-active Safer 6 involvement, delivering a mixture of face to face 'pop up' events with partners/communities and online awareness sessions
- Focussed work in Tipton (an area of risk) with partners
- Delivery of training sessions to foster carers and increased staff sessions for Sandwell Childrens Trust
- Effective adaptation to online delivery during COVID including adapted REWIND resources for schools
- Partner working with West Midlands VRU/SAVI including Prevent delivery during 2021 'exploitation week'

Preventing Terrorism

As a partnership we are all under the statutory Prevent Duty (2015) to work together to prevent terrorism. The Local Authority has strengthened our Prevent Team in the areas of education, community engagement and in developing an improved awareness across the Local Authority and partners through an excellent training and resource offer.

Strengthening our Prevent Offer

- Sandwell Safeguarding Champions (peer mentor scheme) launched in primary schools, secondary schools and Sandwell College
- Developed partnership work and awareness raising to support people with learning difficulties/autism where there have been concerns regarding Extremism/Radicalisation
- Prevent (online safety) information booklet created for Parents, Teachers and implemented for use in the wider community
- Completion and distribution of a Prevent 'Teachers Booklet' providing information, practices and processes to Designated Safeguarding Leads and teachers
- 'Building Resilience Against the Far-Right' pilot programme undertaken in Sandwell
- Development of Artemis, a Prevent on-line training package for professionals
- Pilot of Community 'Understanding Extremism' training launched with initial sessions delivered
- Delivery of annual CTLP briefing event for partners and seniors at Oldbury Council House and developed a series of sanitised CTLP sharing webinars for DSLs



2018 – 2021 Achievements

- In 2020 we launched a new Artemis Prevent training module. 880 professionals have completed this training
- 3844 people have attended WRAP (Workshop to Raise Awareness of Prevent) training over the last 3 years
- 712 professionals have attended 'Understanding Extremism' training
- 950 professionals have attended safeguarding briefings on hate crime
- 89 parents / individuals attended our new online safety community training briefings
- Home Office funding secured to recruit a Prevent Community Engagement Officer in 2021-22

2022 – 2026 priorities

- Deliver Prevent Delivery Plan through Prevent Delivery Group
- HO benchmarks and tool kit fully achieved
- Develop PCEO role and engage hard to reach communities to improve awareness of Prevent
- Continue with high standard of Prevent support to schools via PEO
- Continue to develop VRU partnership working
- Regular updates to training and projects.

Priority 2

**REDUCE
OFFENDING,
REOFFENDING**



& SERIOUS



ORGANISED CRIME

RRSOC

(Reducing Offending, Re-offending and Serious Organised Crime)

The Reducing Offending, Reoffending and Serious Organised Crime Strategic Sub Group is responsible for co-ordination of the work of partners to ensure that the Safer Sandwell Partnership Community Safety Strategy and Action Plan for reducing offending, reoffending and serious organised crime is effectively delivered in Sandwell.

Key Priorities include

- Repeat Offending
- Serious Organised Crime
- County Lines

Statistics show that almost half of all crime is committed by individuals with previous convictions. Police and Probation Services use statistical and clinical risk assessments to focus resources on those most likely to reoffend. The introduction of the Reducing Offending, Reoffending and Serious Organised Crime subgroup to the SSPPCB in 2019 has strengthened partnership approaches across this area and supported the delivery of the 7 pathways out of offending.

Significant work has been taken across all these areas over the past 3 years including;

- Working to introduce creative arts into work with young people engaged with the Youth Offending Service.
- Development of an online space for Sandwell YJS called The Sandwell Hub to provide key information about services, private space for young people and their families and a media gallery to promote work
- Getting to Know' booklet has now been fully integrated into the service, allowing a creative method to be applied to those fundamental pieces of work at the start of an order
- Introduction of the Homelessness Prevention Taskforce during lockdown ensured all offenders could secure temporary accommodation and avoid homelessness. This was exceptionally successful locally whilst more stable accommodation was sought.
- Joint working with the Local Authority and Probation re co-located post to help support offenders in securing and maintaining stable tenancies.
- National review and update in relation to Integrated Offender Management, we have now identified three cohorts of offenders causing the most crime and having the most impact across Sandwell who will be jointly managed and supported away from criminal behaviour using a partnership approach. This is in line with the newly refreshed national IOM strategy.
- In June 2021 the newly formed Probation Service contracted Maximus to provide a holistic approach to supporting ETE opportunities, with a particular focus on employment. Referrals have been much higher than expected and some very positive outcomes achieved so far.

Highlights

Creative Service

First YJS in the country to achieve a Silver Arts Mark Award from the Arts Council in recognition of work undertaken by Youth Justice Partnership to make the YJS more creative. Summer Arts Programme awarded a second Platinum Award through Koestlerin for two years running

HMIP Inspection

HMIP Inspection Rating of Good for Sandwell Youth Justice Service.

Mental Health & Wellbeing

The Probation Service's Personality Disorder Team have expanded and every offender is screened. Where needs are identified offenders receive enhanced, dedicated psychology and probation intervention and support.

PCC funded posts have been established in Black Country Courts to identify and support increased numbers of referrals to receive this specialist intervention which addresses mental health issues linked to substance abuse and offending.

The Sandwell Afro-Caribbean Mental Health Foundation, have been commissioned to provide dedicated intervention and support to suitable offenders from BAME backgrounds

Black Country Reducing Reoffending Strategy

The strategy was developed 2019 – 2022 and helps to develop a model which will provide early identification and interventions with emphasis on preventing and reducing offending and reoffending, and reducing risk of harm (See Below)

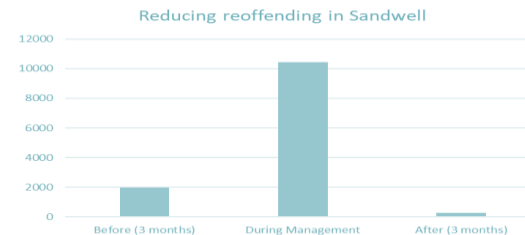
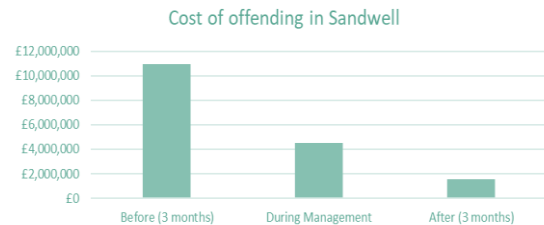


Local Picture

- Sandwell average adult reoffending rate is 29.5%
- Sandwell average youth reoffending rates is 42.64% which has reduced from 47.55%
- Sandwell has higher rates of reoffending than the Black Country trend for 18-21
- Home Office data shows there are 1165 offenders (1089 males, 68 females) committing 1978 offences between them

Repeat offending

Sandwell has the second highest volume of offenders in the West Midlands with 1165 offenders (rolling Home Office data). There have been some key indicators to show that integrated offender management is working with an 86% reduction in both offences and costs.



Significant work has been undertaken in developing the 7 pathways out of offending including accommodation, employment and training and mental health and wellbeing work. Over the next five years we will work to further embed the pathways and priority areas which are included in the chart opposite.

In the 2019-21 strategy the following objectives in relation to repeat offending were agreed

What we Said	What we Did
We will track reoffending rates for those released from custody to establish whether we are more effective in helping to transition young people from custody to the community	Reoffending rates have reduced since 2017 with adult offending dropping to 29.52% and young people to 42.64%
We will improve engagement with our young black offender cohort through bespoke mentoring support.	Task and Finish groups have been convened to understand disproportionality and this work will be taken forward into the new plan
We will evaluate the impact of the Kitchen Table Talks to establish whether there has been improved engagement with, and information to, parents	Kitchen Table Talks, piloted in Sandwell were evaluated and are now supported by the Violence Reduction Unit to be embedded across the region

Pathways and priority areas of delivery



Accommodation and support

- Stable accommodation can reduce the likelihood of reoffending by more than a fifth
- It provides building blocks to gain employment and access support services



Education, Training and Employment

- Employment reduces the risk of reoffending between a third and a half
- There is a correlation between offending and low achievement, poor literacy, numeracy and language skills



Health

- Adult offenders are disproportionately more likely to suffer from mental and physical health problems.
- 31% of adult prisoners have been found to have emotional wellbeing issues linked to their offending behaviours.



Substance Misuse

- Two thirds of adult prisoners use illegal drugs in the year prior to imprisonment
- Intoxication by alcohol is linked to 30% of sexual offences, 33% of burglaries, 50% of street and violent crimes



Finance, benefits and debt

- Having a lawful income is vital to offenders' rehabilitation
- Approximately 81% of offenders claim benefits on release from prison



Children and Families

- Maintaining a strong relationship with families and children strongly assists in helping adult offenders sustain changes and avoid reoffending
- Custody can place added strain on family relationships



Attitudes, thinking and behaviour

- Offenders are more likely to have negative social attitudes and poor self-control
- Addressing attitudes and thinking behaviour during custody can reduce reoffending by up to 14%

2018 – 2021 Achievements

- Refresh of the Black Country Reducing Offending Strategy and development of new NPS Strategy
- National and regional structural realignment of NPS
- Commissioning of services to support offending pathways undertaken
- Moved from a YOS Management Board to a Youth Justice Partnership and Youth Justice Service.
- Clear focus of becoming a more creative service
- First YJS in the country to achieve a Silver Arts Mark Award from the Arts Council

Summer Arts Programme

★ Summer Arts college in both 2019 and 2020 won platinum Koestler awards (for creative work in a criminal justice setting)

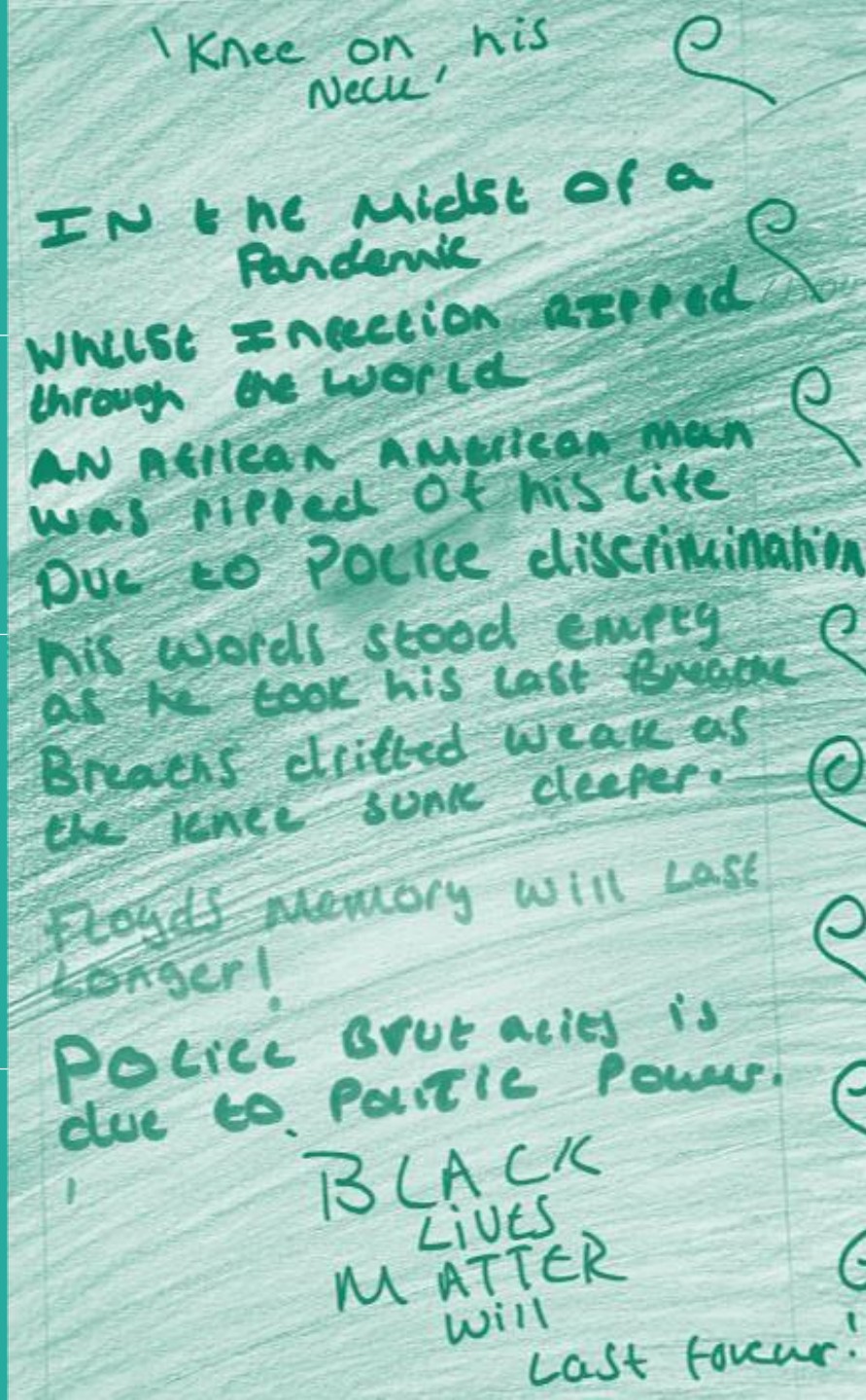
Ongoing funding

★ second year running the Summer Arts College funded by Unites

★ Special under 25's award for a portrait created by a young person, also chosen and featured in Koestler's annual art exhibition at the Southbank Centre, London

National Award

★ Bronze award for VR County Lines video



A MORE CREATIVE SERVICE

One of the priority areas of work for the Youth Justice Service was to work towards making services more creative for young people.

For the second year running they ran a summer arts college funded by Unitas. Virtual creative sessions, were run in partnership with Gazebo Theatre. The content of the sessions was planned alongside the artists who provided a list of materials that the young people would need to participate in the sessions. Alongside the technology, each young person was also provided with an arts kit containing these materials

Young people participated in several virtual workshops including: Creative Writing, Podcasts, Magic, Balloon modelling, poetry, digital illustrations, film making, music and watched a specially adapted live theatre performance.

Given that this was the first time a piece of work on this scale was being completed using a virtual approach, the success of the project could not be anticipated. However this proved to be extremely positive with 8 young people achieving at least 1 arts award with 7 young people gaining 3 arts awards each.

Given the success of the Summer Arts College, Sandwell YJS were invited by Unitas to apply for additional funding to deliver a Silver Arts award aimed at young people who had previously achieved the Bronze Arts Award.

Giving young people a safe space to explore feelings around the murder of George Floyd

Local Picture

From April 2018 – March 2021 there have been

- 8 Organised Crime gangs mapped in Sandwell
- 11,393 incidents of violence with injury
- 764 incidents of knife crime with victims over 18
- 184 incidents of knife crime where the victim is aged 10 – 17 years
- 68 incidents of knife crime where offender is over 18
- 11 incidents of knife crime where the offender is aged 10 – 17
- 234 incidents of gun crime
- 55 markers for gangs related crimes
- 105 gang related non-crimes

Serious Organised Crime

Serious violence has a devastating impact on victims and their families, instils fear within communities and is extremely costly to society. Preventing and reducing organised crime has been introduced as a Sandwell priority because of the increased threat posed by organised crime and the pressure on vulnerable people who are often exploited.

Our focus in Sandwell is to enable more joined up working around protecting local people and businesses by making it hard for SOC gangs to operate effectively in Sandwell. We are doing this through ensuring enhanced collaborative working in relation to known locations of organised crime, sharing intelligence to strengthen procurement across Sandwell and strengthening partnership approaches to preventing sale of illegal counterfeit goods. All of which requires a strong partnership approach.

The government have carried out several consultations and are introducing the Serious Violence Duty. This is a key part of the Government's programme of work to prevent and reduce serious violence; taking a multi-agency approach to understand the causes and consequences of serious violence and focus on prevention and early intervention, informed by evidence. In addition to tough law enforcement we need to understand and address the causal factors that cause someone to commit violent crime in the first place. The Duty aims to ensure that agencies are focussed on their activity to reduce serious violence whilst also providing sufficient flexibility so that relevant organisations will engage and work together in effective local partnerships.

In the 2019-21 strategy the following objectives in relation to organised crime were agreed:

What we Said	What we Did
We will use tactical and operational groups to manage and monitor offenders	A new organised crime group meeting was formed to provide a multi-agency response to serious organised crime
We will use existing MAPPA, GODOC, ODOC, Deter and other mechanisms to manage offenders	These structures continue to operate and we will use data more effectively going forward

2018 – 2021 Achievements

- Funding from Home Office for SW NPU around SOC Violence
- Development of partnership Organised Crime Group to share intelligence and tackle and disrupt organised crime in Sandwell.
- Development of offender employment pathways with DWP including Community Youth Hub
- Homelessness and Complex Case Referral Pathway into accommodation services through the Local Authority

2022 – 2026 priorities

- Raise awareness of serious organised crime and organised criminal gangs with partners through the OCG
- Protect local people and businesses by making it hard for SOC gangs to operate effectively in Sandwell
- Share intelligence to strengthen procurement across Sandwell,
- Strengthen partnership approaches to preventing sale of illegal counterfeit goods

Local Picture

- For the past three years we have worked to embed a partnership approach to the County Lines intensification weeks
- In October 2021 County Lines week work included:
 - 32 people arrested
 - 11 warrants executed
 - 77 Wraps of Heroin recovered
 - 396 wraps of Crack confiscated
 - £237,000 worth of cannabis found
 - £8305 cash seized
 - 19 weapons recovered
- 73% of people linked to county lines activity between April 2018 and November 2020 were young people aged 25 or under
- The overwhelming conclusion is that young males with Black ethnicity, most often from the most deprived parts of the West Midlands, are hugely over-represented in police information about County Lines activity

County Lines

West Midlands Police data includes markers for people involved in County Lines as victims, perpetrators or suspects. This includes information on where individuals reside and a significant proportion are from inner-city Birmingham and Smethwick. 41% of people identified in this data as involved in County Lines activity – as a victim, perpetrator or suspect – were recorded as being of black ethnicity. This is significantly higher than the data for the wider West Midlands population, which has a 6% black population.

Multi-agency practitioners have also identified concerns that there are low levels of recognition and identification across the sector regarding the ways in which women and girls are exploited through County Lines drugs distribution.

Sandwell continues to work with the **Regional Strategic Criminal Exploitation and Missing Board** which through good multi-agency representation and attendance is facilitating and enabling the development of new and innovative policy and practice to improve our single and joint responses to criminal exploitation and missing including County Lines.

A regional Child Exploitation Data Framework has been created by the WM VRU analysts who have produced an interactive dashboard which sets out the various types of data collected from the Police, Local Authority Children's Services, Education and Health to start to understand what exploitation looks like across the region.

County Lines Intensification Weeks are run on an annual basis and serve as an opportunity to focus on the 4 P approach to tackling, disrupting and preventing criminal exploitation.

County Lines Rescue and Recovery project Launched in September 2021, this is funded until March 2022 and supports young people involved in County Lines and gangs across all local authority areas in the region. Through the provision of flexible support from case workers with "lived experience", young people can exit County Lines drug networks, reconnect with families and begin to build positive lifestyles away from crime.

2018 – 2021 Achievements

- County Lines Intensification Week; October's enrichment activity was focused on the 4 P approach to tackling, disrupting and preventing criminal exploitation of C/YP and vulnerable adults. 800 people across the region attended training sessions over the one week,
- During Operation Aident County Lines intensification week 2021 14 young people were safeguarded

2022 – 2026 priorities

- Strengthen and develop the organised crime response through the OCG partnership
- Raise awareness of serious organised crime and organised criminal gangs with partners
- Learn from the evaluation of the County Lines Rescue and Recovery Project



National award

Royal Society for Public Health: Health and Wellbeing Awards 2019



Ongoing funding

The team have secured funding through the Better Care Fund to expand this programme



Evaluation

Evaluation of this project shows this approach reduces offending and acute health service demand

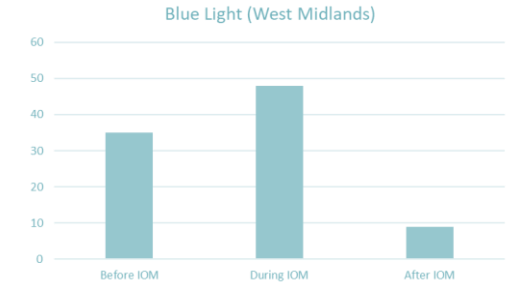
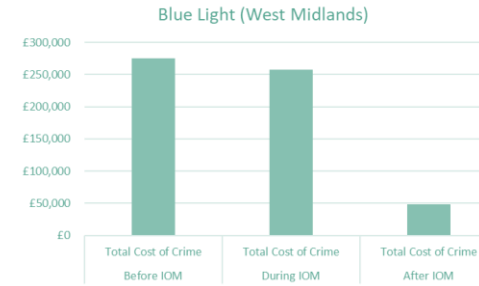


National Award

Blue Light won the Guardian Public Service Awards

Blue Light Project

We are starting to understand the landscape and now have a clear local picture to respond to treatment resistant drinkers. Data shows a 74% reduction in reoffending and 82% reduction in the cost of crime.



As a response the partnership adopted a multi-agency **'Blue Light' approach to supporting high impact, change-resistant problem drinkers** with a view to prevent and reduce alcohol dependency and transform the lives of some of the Borough's most disadvantaged and vulnerable people.

The multidisciplinary team incorporates public health, ambulance, police, probation, fire, local GP services, mental health professionals, the alcohol treatment provider and NHS professionals. These liaise together for monthly reviews to assess the progress of these clients through their interactions with them.

Feedback from the judging panel

" Focus is client centred and supports harm reduction and the social return on investment is considerable. The programme is an exemplar of integrated public health interventions to address critical public health problems and the learning is transferrable to other sectors and issues."

Feedback from a service user who was supported through Blue Light

"The Blue Light project helped me in a very big way and saved me daily physical and psychological abuse . They supported me to address my alcohol misuse, took me to my medical appointments to address my physical and mental health as well as stopped me from experiencing further abuse. I am grateful for all they have done for me. Thank you very much."

Priority 3

PREVENT and REDUCE

**CRIME and
ANTI-SOCIAL
BEHAVIOUR**

IN OUR NEIGHBOURHOODS

Intro

Preventing and reducing crime and ASB cannot be tackled by one single agency, but needs a multi-disciplined approach to provide a holistic response. By bringing partners together both strategically and operationally, there is a focus on problem solving and bringing together resources to prevent and tackle the issues at a local and boroughwide level.

This is achieved in Sandwell by partners coming together monthly through Borough Tasking and Town Tasking meetings where there is the opportunity for partnership data and intelligence to be shared so that an appropriate and proportionate response can be coordinated.

The meetings are used to discuss community and place based concerns as well as a closed element to the meetings to discuss individual cases that may involve vulnerable victims or perpetrators. At the Borough Tasking meetings, the membership focuses on the impact areas and look at issues such as Hate crime, community tensions, domestic abuse and the causes of crime in more detail.

The OPCC currently funds a number of Community Safety Analysts to provide data to inform the 7 partnerships across the West Midlands. The provision of this data is currently being reviewed as changes such as the introduction of the VRU and adoption of public health approaches to violence have come into place.

The development of new and more consistent data provision will support tasking and ensure that actions are demand led and evidence based ensuring proportionality and more appropriate use of resources.



Highlights

Hate Crime

Over the last 3 years Sandwell's response to hate crime has been strengthened by the development and delivery of the Partnership Hate Crime Plan which is monitored at Borough Tasking.

Keeping our residents safe and secure

Streamlined, evidence based, accountable and efficient deployment process for the deployment of mobile CCTV camera's managed through Town Tasking

Place Based Approaches

Joint partnership approaches involving police, CCTV team, SMBC Environmental Protection Officers (EPOs), Youth Services, SMBC ASB team, DECCA and the voluntary sector in tackling emerging ASB issues such as nuisance bikes; youth ASB and knife crime; nitrous oxide canisters and covid breaches.

Strengthening our ASB Responses and Capacity

SMBC appointed a dedicated ASB Manager in December 2018. During the last 3 years we have moved to end to end case management, significantly invested in training staff and increased our use of the 2014 ASB Powers. We also reintroduced Town Tasking Meetings, each Chaired by Town ASB Leads and local Police Sergeants.

Borough Tasking

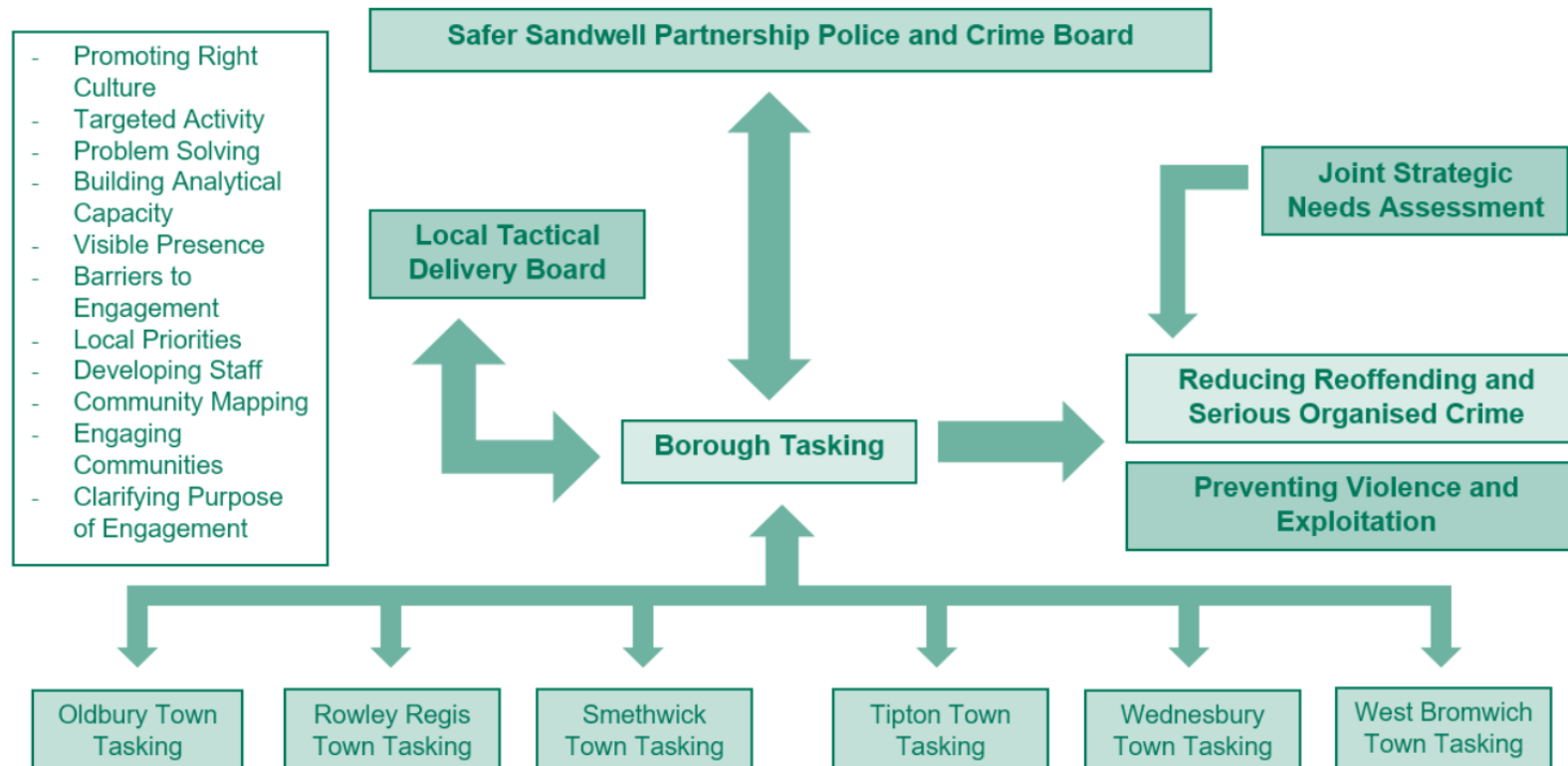
Borough Tasking is one of the Safer Sandwell Partnership Police and Crime Board's (SSPPCB) sub groups connecting Town Tasking with borough wide strategic issues and decision makers. It is a single forum where partners come together and have an overview across the borough of Tasking to reduce crime, ASB and protect vulnerable communities.

This is achieved by looking through various lenses to identify new and emerging trends including exploitation, crime, ASB and community tensions. The group work together to look at root causes and problem solving, focusing on high impact areas and bringing resources together to prevent, tackle, and manage these issues.

Town Tasking

Town Tasking is the key mechanism in Sandwell by which partners work together to tackle incidents, identify trends in relation to crime and anti-social behaviour (ASB) and facilitate inter-agency collaboration at a local level.

It also enables preventative and responsive actions to be taken to protect vulnerable people from threats to their safety and wellbeing. This is particularly important with emerging and increasingly sophisticated types of criminality including exploitation and organised crime. This localised approach to problem solving in Sandwell involves a multi-agency process designed to find the most effective and efficient solution for any identified problem.



The agenda focuses on (but not exclusively):

- ✓ Police Demand Impact Areas
- ✓ ASB demand areas
- ✓ Hate crime, community tensions and extremism (including overseeing the Hate Crime Plan and scorecard)
- ✓ Overview of the monthly Town Tasking meetings identifying trends and understanding the town nuances
- ✓ Spotlight on Tasking on a town basis
- ✓ CCTV deployable cameras
- ✓ Emerging trends across the borough identified by feedback from partner agencies, intelligence and shared analysis
- ✓ Deep dives into new and emerging boroughwide issues
- ✓ Identify ways of preventing, disrupting and deterring crime, ASB and exploitation by using partner powers and maximising resources
- ✓ Share best practice and successful outcomes as part of continuous improvement
- ✓ Discuss community issues escalated where a resolution has not been effective or found at Town Tasking
- ✓ Closed meeting to discuss individual cases that are escalated from Town tasking meetings where a resolution has not been found or a case has been stuck

Local Picture

- 144 Town Tasking Meetings and 36 Borough Tasking Meetings held during the last 3 years
- A robust town tasking process where local and relevant issues can be referred for discussion and action
- 110 individual cases discussed through tasking and agreed partnership approaches instigated with positive outcomes
- Remedi is funded by OPCC to provide support to all victims of hate crime
- Launch of 46 Third Party Reporting Centres across Sandwell representative of all the hate crime strands
- Article to raise awareness of hate crime included in the Sandwell Talking News, a weekly audio newspaper for visually impaired people
- A robust partnership approach to tackling Nitrous Oxide Gas Canisters issues that led to the implementation of a Boroughwide PSPO
- Focus on tackling local issues at a town level drawing on local resources including the voluntary sector

Reducing Crime and Anti-Social behaviour

Reducing Crime and Anti-Social behaviour remains a priority and we recognise that one single agency cannot tackle this alone.

We have strengthened this by making the Chairs of our Town Tasking meetings the local ASB Town Leads and the Borough Tasking meetings are chaired by the police. Our Borough Tasking group oversee and scrutinise our partnership work across the borough

Safer 6

Sandwell's annual autumn Safer 6 campaign celebrated its 12th anniversary in 2021. Safer 6 promotes a wide range of community safety initiatives and awareness raising across the six towns of Sandwell,. This is delivered by partners through a range of medias, training and events. Themed weeks included – Hate Crime; Violence against Women and Girls; Anti-Social Behaviour and Crime; Substance Misuse; Under 25 Violence and County Lines, Exploitation as well as various activities carried out in the six towns.



Support for victims of crime in Sandwell is provided by Victim Support which is a national independent charity. During 20/21 there were 6068 referrals for support and 3105 referrals so far 21/22

In the 2019-21 strategy the following objectives in relation to reducing crime and ASB were agreed:

What we Said	What we Did
We will use current intelligence and knowledge of partners and communities to identify and take prompt actions needed to keep communities safe from crime and ASB	Tasking was reviewed and strengthened to enable effective information sharing and data capture to enable place based effective interventions
We will fully embed the new tactical assessment and borough tasking model and create strong connections with town tasking and COGS	Tasking is now firmly embedded across each of Sandwell's 6 towns with a monthly Borough Tasking also established. These have run throughout the pandemic ensuring a strong local problem solving focus. .
We will renew and strengthen the contribution of partners to Tasking	Achieved through consistent agendas and enhanced data

2018 – 2021 Achievements

- Joint partnership approaches tackling emerging ASB issues such as nuisance bikes; youth ASB and knife crime; nitrous oxide canisters and covid-19 breaches
- Streamlined, evidence based, accountable and efficient deployment process for the deployment of mobile CCTV camera's
- Development of the Sandwell Commercial Centres Group tackling street dinking and street homelessness
- Developed work on hate crime
- Operation Hercules and ongoing work around car cruising

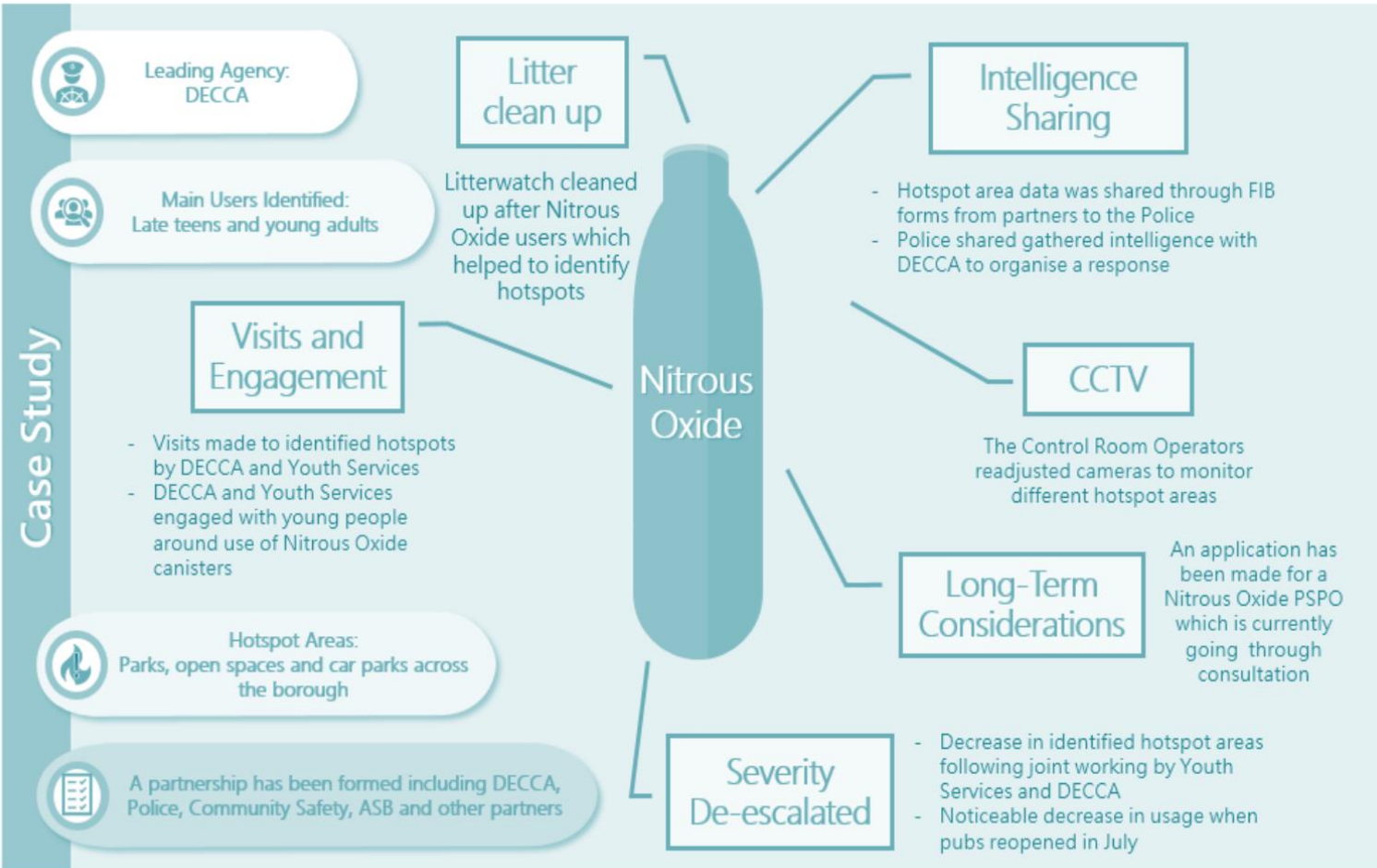
2022 – 2026 priorities

- Develop our partnership data to enable us to focus on the most pressing issues
- Review and further develop our approach to hate crime
- Strengthen our engagement with communities to encourage reporting, provide intelligence and develop solutions
- Target partnership resources at a local level to tackle emerging issues that is impacting on individuals and whole communities

CASE STUDY

Borough Wide Partnership Approach to Nitrous Oxide Gas Canisters

Borough Wide Partnership Example of Successful Partnership Working



The litter and the associated ASB of nitrous oxide gas canisters was recognised as a borough wide issue.

- Concerns of health impact on young people
- The number of canisters discarded in public places and impact on environment
- The associated ASB – people congregating in groups and causing nuisance.

Approach

Discussed at Borough and Town Tasking meetings and agreed a Boroughwide partnership approach to tackle the issue.

Feedback from public consultation regarding proposed PSPO

Feedback from 95% of respondents demonstrated support for the proposed PSPO

The littering of discarded canisters was most commonly pointed out as the reason for why individuals were in favour of the proposed PSPO (68%). This was followed by the anti-social behaviour that was believed to be linked to the inhalation of Nitrous Oxide (22%) and worries around children coming across discarded canisters (18%)

The Community Safety Team administers and manages the annual CSF grant allocated by the Office of the Police and Crime Commissioner (OPPC). Last year Sandwell was awarded £165k which was used to fund 10 projects that contribute to the Community Safety Partnerships priorities

Project 12

Project 12 (P12) is delivered in universal and targeted settings to build resilience and minimise harm. It can be used as part of PHSE lessons and all resources are online, so it can be easily accessed by anyone, and updated centrally to ensure its relevance. Grant funding was allocated to develop resources for Key Stages 2 and 3

Black Country Women's Aid – Domestic Abuse Advocates (DAA)

The grant provides one fifth of the specialist support to victims of domestic violence and abuse (DVA), categorised as medium and standard risk. The last 12 months has seen an increase in Domestic Abuse nationally during lockdown, and 402 victims have been supported by this service during this period.

TSA

Delivery of one to one mentoring sessions with young people identified by the Children's Trust Horizons Team who are at high risk of exploitation. TSA have worked successfully with 13 young people over the last 12 months using innovative ways of engaging in one to one interactions during lockdown

CSKN

Delivery of one to one mentoring and skills development to gang-entrenched young people identified by the Youth Justice Team. Two 12-week sessions were delivered to 10 young people.

A&E Independent Domestic Abuse Advocate (IDVA)

Two IDVAs working at Sandwell and City Hospital A&E departments respectively, and an Information Officer capturing data across both sites as well as contributing to MARAC research in; 241 victims have been identified and referred to the IDVA over the last 12 months

Creative Academies

Funding for a multi-media programme which focuses on engaging and re-engaging disadvantaged and vulnerable young people from Sandwell Community Schools depicting their stories and helping to divert them away from negative behaviour.

Krunch

Funded to deliver one to one mentoring sessions to 9-13 year olds who have family or peers involved in violent acts or gang affiliation, successfully delivered mentoring to 13 children this year.

Rewind

Grant funded to provide In-depth training to support practitioners in understanding all forms of extremism, including Al Qaida and Daesh inspired ideology and Far Right ideology. 9 sessions were delivered to a total of 139 delegates.

Modern Slavery

Grant funding to support Slavery Free Communities. A range of materials were sourced from the Modern Slavery Helpline in different languages, which consisted of posters, pens and keyrings. The partnership delivered a conference regarding sexual exploitation to raise awareness of sexual exploitation, over 1000 delegates attended

Albion Foundation

Delivery of positive activities to young people within the Sandwell area while working in partnership with West Midlands Police to deliver a group mentoring programme through sport..



Hate Crime

Over the last three years we have developed and delivered a Sandwell partnership Hate Crime Plan, our achievements include:

Increase awareness of hate crime and the impact that it has amongst the Sandwell workforce and communities

- Developed and launched online hate crime training
- Developed and launched a 7-minute briefing which has been shared with organisations to brief their employees and volunteers
- Developed and delivered awareness training for Sandwell MBC employees
- Delivered Hate Crime Awareness to elected members
- Delivered Hate Crime Awareness to the third sector
- Delivered various activities during hate crime week to raise awareness

Engage and raise hate crime awareness amongst young people.

- Conducted a Hate Crime Youth Survey with young people in schools. The findings led to hate crime education being incorporated into the new RSHE school curriculum and lesson plans
- Just Youth Webpage Updated to Include Hate
- Hate Crime Awareness Training has been delivered to over 50 youth workers in Sandwell
- Delivered a Hate Crime Awareness session for SHAPE Youth Forum

Building confidence in local communities to report instances of hate crime/ incidents.

- Conducted a review of Third Party Reporting Centres (TPRCs)
- Launched 46 new TPRCs across Sandwell, representative of all strands of hate crime to increase ways to report and support for victims
- Developed a communications plan to promote messages throughout the year via social media
- Article included in the Sandwell Talking News, a weekly audio newspaper for visually impaired people, to raise awareness of hate crime, Third Party Reporting Centres and to encourage reporting

Victims supported

- Standby Me Bystander training delivered to 23 active citizens
- Victims supported through Victim Support and more recently REMEDI

[Further information on hate crime can be found here](#)

National Recognition

The programme won national recognition in 2021, winning the APSE Annual Service Award for Best Community and Neighbourhood Initiative

Amazing Reach

3,000 young people and their carers benefited from universal sessions delivered via assemblies, transition evenings, events and group sessions.

Early Interventions

The programme provided early help and interventions with the aim of having a longer-term impact on the prevention of youth crime

Mentoring

Over 600 one to one mentoring sessions were delivered to over 120 young people by 12 voluntary sector organisations.



Supporting Families Against Youth Crime iTrust

The Supporting Families Against Youth Crime (SFAYC) programme, rebranded as iTrust was launched in April 2019, following a successful bid for funding from the Ministry of Housing, Communities and Local Government (MHCLG).

Some of the funding paid for a small dedicated team who worked with young people, parents/carers, schools and voluntary sector organisations to deliver a menu of prevention interventions to young people in years 6 & 7 transitioning from primary to secondary school. Working in two of our police impact areas West Bromwich and Smethwick, this early help approach equipped our young people to make positive choices at this key transition period with the focus on reducing future youth crime and violence

Feedback from the MCHLG included "it was particularly refreshing to see such an innovative 'home grown' approach to serious youth violence"

[Read evaluation here](#)



Links to other reports used

[Strategic Needs Assessment - West Midlands Violence Reduction Unit \(westmidlands-vru.org\)](https://www.westmidlands-vru.org/)

[Home | data.police.uk](https://www.data.police.uk/)

[2020 UK annual report on modern slavery \(publishing.service.gov.uk\)](https://www.publishing.service.gov.uk/government/uploads/system/uploads/attachment_data/file/1027878/Draft_Guidance_-_Serious_Violence_Duty.pdf)

[Police & Crime Plan - West Midlands Police & Crime Commissioner \(westmidlands-pcc.gov.uk\)](https://www.westmidlands-pcc.gov.uk/)

<https://www.westmidlands-vru.org/app/uploads/2021/06/WM-REGIONAL-STRATEGIC-EXPLOITATION-FRAMEWORK.pdf>

[https://assets.publishing.service.gov.uk/government/uploads/system/uploads/attachment_data/file/1027878/Draft Guidance -
_Serious Violence Duty.pdf](https://assets.publishing.service.gov.uk/government/uploads/system/uploads/attachment_data/file/1027878/Draft_Guidance_-_Serious_Violence_Duty.pdf)

[Corporate Plan | Sandwell Council](#)

**PREVENT
VIOLENCE
and
EXPLOITATION**



**REDUCE
OFFENDING,
REOFFENDING**



& SERIOUS



ORGANISED CRIME

PREVENT and REDUCE

**CRIME and
ANTI-SOCIAL
BEHAVIOUR**

IN OUR NEIGHBOURHOODS

**PROTECT and
SUPPORT**

**VULNERABLE
VICTIMS**

